



16th Annual **Bull & Female Sale**

Saturday April 5, 2014

at the farm 1 mile East of Goodeve, SK

& 3 miles North

Lunch at 12:00 noon

Sale at 1:00pm





WELCOME

Welcome to our 16th annual Crescent Creek Bull & Female sale. Thank you the repeat customer base who have chosen our program to source top angus genetics, cattle which have met the needs of a no nonsense cattle industry for 3 generations.

2014 marks a time when prices have hit highs never seen before, finally a return on countless hours of labor and a chance to recover a profit in the beef business. As we see these high returns it becomes very apparent now is the time to source the type of genetics that will reap the highest return on your investment. We feel our offering will make these decisions much easier.

Our program is simple, no frills, a cow herd in the making for over 60 years. Time tested genetics with the beef business at the root of all decisions. The sire groups represent fresh genetics for both our repeat customer base and some new and exciting ones for the purebred industry. As well solid time tested sires which have been accepted for calving ease, performance and strong maternal traits.

Plan to attend SAT. APRIL 5th and expect to see, as in the past, bulls full of red meat & muscle with large testicles and sound feet. The female offering is the largest to date. They represent the proven cow families which produce this strong set of bulls year in and year out. A chance to select from sire groups and cow families which are well recognized in the industry. We pride ourselves on our sale offering, the hospitality and our after sale service. Be sure to check out our web site as well as cattleinmotion to view the sale cattle video or perhaps bid on line if the need arises. The video will be of great benefit to help sort thru this strong offering.

Once again special thanks to all who help put this special event on. We could not do it without your help. Stop by at any time, you are always very welcome. Thanks for coming.

The Olynys



Offering

60 Black Angus Yearling Bulls
40 Top Cut Black Angus Open Females

Saturday April 5, 2014

at the farm 1 mile East of Goodeve, SK & 3 miles North

Lunch at 12:00 noon - Sale at 1:00pm



SALE DAY PHONES

Rob Cell: 780-916-2628

Bob Cell: 306-834-7385

Wes Cell: 306-728-8284

Sale Barn: 306-876-4420

Darren: 204-526-7407

Sale Staff

Auctioneer, Steve Doran - 403-540-9498 or 760-972-7736

Rob Holowaychuk, OBI - 780-916-2628

Bob Toner, OBI - 306-834-7385

Craig Flewelling - 403-224-2111

Mark Stock - 403-357-8104

Darin Bouchard - 204-526-7407

Clayton Hawreluk - 306-621-3824

Gary Rudychuk, Kelvington Stockyards - 306-865-7448

Ryan Hurlburt - 306-621-5649

Nathan Marin - 306-869-7130

Special Representatives

Mike Howe Saskatchewan Angus President - 306-631-8779

Belinda Wagner, Saskatchewan Angus Manager - 306-757-6133

Chris Poley, Today's Angus Advantage - 306-220-2722

Dave Callaway, Angus World - 403-549-2234

Insurance

Bonnie Thompson, Alameda Agencies - 306-484-2258

Terms of Sale

Cash or cheque at par payable on Sale Day, unless other arrangements have been made prior to sale. Registration papers will be transferred only upon full and final payment. Announcements from the block will take precedence over printed material in the catalog.

Payment Terms

Bulls 60% down sale day, 40% June 1, 2012, two cheques sale day.
Females 60% down sale day, 40% October 1, 2012, two cheques sale day.
\$75 credit if you take your purchase home sale day on purchases over \$2,000.00

Terms & Conditions

All cattle sell under the standard terms and conditions set forth by the Canadian Angus Association. Precautions have been taken to ensure your safety, neither Owners or Management are responsible for any accidents.

Accommodations

Melville Inn, Melville, SK - 306-728-5255

Sigma Inn & Suites, Melville, SK - 306-728-4688

Howard Johnson, Melville, SK - 306-728-4546

Ituna Motor Inn, Ituna, SK - 306-795-2244



SALE INFO



- Enrolled on CAP (Canadian Angus Performance)
- All cattle ROP tested (a firm belief for producing superior beef cattle at Crescent Creek).
- All bulls will be ultrasound scanned for carcass data under the CUP system. CUP data will be available prior to the sale on our website and on sale day.
- All Crescent Creek Cattle are **Fully Guaranteed** for both soundness and fertility
- Bulls will be semen tested as well as have scrotal measurements (available sale day)
- Delivery can be arranged with Crescent Creek
- Crescent Creek's breeding program has developed many 1/2 and 3/4 brothers (**Consistency Counts**)
- Actual sale weights will be available sale day.
- Crescent Creek will keep bulls until May 1. Insurance on sale bulls that are left is encouraged by the buyer.
- **Crescent Creek reserves the right to collect semen on any bull.**

Calving Ease

Bulls have been rated (in our opinion) on calving ease ability

* - recommended on cows

** - moderate birth

*** - indicates calving ease elite

Volume Discount

3% on 3 bulls, 4% on 4 bulls, 5% on 5 bulls, 6% on 6 bulls, 7% on 7 bulls, 8% on 8 bulls, 9% on 9 bulls, and 10% on 10 or more bulls.

Ultra-sound

Windy Ridge Ultrasound - Rod Wendorff - 403-330-3000

Feed Specialist

Blairs.Ag - Patty Smith - 306-528-7592

Trans Tech Genetics Ltd.

Dr Vlad Pawlyshyn - Embryo Information - 306-876-4408

Animal Health Service

Dr. Doug Mann, Swift Current, SK, Semen Evaluation
- 306-773-4121

Herd Health

Melville Vet Clinic - Dr. Dale Cochrane - 306-728-4456

Pictures

Rob Hollowaychuk, OBI



CRESCENT CREEK ANGUS

Welcome once again to Goodeve, Sk.; to one of the most anticipated Angus sales of the year. Crescent Creek Angus has become known as a great seedstock source. Backed by a superior cow herd, the Olynys continue to improve and present a great product before their customers.

The cow families at Crescent Creek run deep, led by the Rosebuds. Their accomplishments have passed all expectations for both Crescent Creek and customers alike.

Crescent Creek have always paid special attention to the basics in their herd bull choices; strong masculine bulls with both excellent feet and exceptional performance. As well ultrasound carcass data continues to be used as a tool in presenting a superior product.

The best appreciation for the Crescent Creek program is a visit through the cow herd in late summer; what a set of cows and what a set of calves.

Year in and out the customer service has remained at a high level insuring that the customer is always looked after. And best of all do not forget the hospitality; the great dinner and refreshments to follow; what more could you ask for in a special Angus environment that is family owned and operated.

Please join us at Crescent Creek; if you need any assistance with bull or female selection do not hesitate to call sales staff, OBI or Wes.

Rob Holowaychuk, OBI

P.S. If you want to start a herd or strengthen your existing program, remember the great selection of open heifers – 40 of them!



Optimal Bovines Inc.

Red Deer, AB
Office 403-341-5098
Fax: 403-343-6133
Email: o.b.i@shaw.ca
www.cattlemanagement.ca

Rob Holowaychuk ... 780-916-2628

Bob Toner ... 306-834-7385

Kirk Hurlburt ... 306-222-8210

Mark Holowaychuk ... 403-896-4990



FEEDING & HEALTH

As in past years, our bulls have been grown out and never "pushed". We appreciate the fact these young bulls have to last year after year at your place. The bulls were hand fed a bull ration consisting of high levels of protein and

no barley. They were fed to achieve an average daily gain of 3 pounds. Free choice brome hay was also fed. The females were fed a rolled oats ration along with a protein pellet to achieve approximately 2 pounds of daily gain. They are not over fitted to ensure proper development as breeding females.

The vaccination program consisted of Express 5 and blackleg shots. All breeding females & bulls will have had their pre-breeding Express 5 vaccine and blackleg booster prior to the sale. The cattle have had plenty of exercise in large pens, and are very free moving.



ONLINE BIDDING

*All bulls will be penned outside prior & during the sale.
Cattle will be sold by video. No cattle will enter the ring*

New for this year we have acquired the services of Cattle in Motion. This will allow you to bid on the bulls via the internet. We would much sooner see you in the stands at our sale. But for some reason you cannot attend this gives you a chance to bid on the bulls at the live auction. In the event we would have another bad weather day, this could help some of you out.

If you are planning to bid on line we suggest you come see the bulls prior to the sale.

Once again we would like to see you sale day, but this does give you an option.

*Online Bidding & Videos of every lot on our website.....
www.crescentcreekangus.com*

SALE BROADCAST BY:



WWW.CATTLEINMOTION.COM

Online Bidding available to all approved Account Holders who have Signed Up to Bid at the sale 24 hours in advance. Visit www.cattleinmotion.com today to Create an Account and get set up for Online Bidding.

Contact Sarah Buchanan 519-546-3352, sarah@cattleinmotion.com for assistance

is more reliable than looking at the bull's own birth weight. A bull with a 65 lb birth weight may have been born early, may be a twin or could have been born to a heifer. These sorts of things are accounted for in the EPD calculation. Weaning weight and yearling weight are easily measured performance traits. A bull with a 10 lb high weaning EPD than another bull of the same breed will sire calves that weigh an average 10 lbs more at weaning.

The milk EPD is a maternal EPD. What this means is that it is predicting the performance of the animals daughters, not the sons. The daughters of a bull calf with a +20 milk EPD would be expected to wean calves that weigh 10 lbs more than a bull with a +10 milk EPD. Obviously, the sons don't produce milk, but they can pass on superior traits to the next generation. If you want more milk in your herd, choose sires with higher milk EPDs. Comparing animal to animal when looking through the sale catalog is one way to use EPDs; another is to compare to the breed average usually also posted in the sale catalog. It is important to realize that the breed average does not mean that the average animal possesses that particular set of numbers rather that it is the average for each individual trait. If you are looking for a heifer bull then compare the birth weight EPDs to the average birth weight EPDs for the breed.

One of the most common mistakes I see is the tendency to focus on one trait when selecting bulls versus balanced trait selection. Cattlemen in the market for a heifer bull will focus on a calving ease breed and then look for a bull with a low birth weight EPD. Likewise, I have seen bulls selected for use on heifers with breed leading WW and YW EPDs. With the exception of what we call curve benders these traits are related. Bulls with really high WW EPDs generally have BW EPDs well above average. Determine which traits are important to you, the choose acceptable EPD ranges for those traits, and realize that tradeoffs may have to be made

Written by: Dr. Colin Palmer

Average Black EPDs for all Calves born in 2013

	Birth Weight	Weaning Weight	Yearling Weight	Milk	Total Maternal	REA	Marb	Fat	Carcass Weight
EPD	+2.7	+43	+75	+19	+41	+0.23	+0.31	+0.010	+22

205 & 365: All 205 & 365 weights in the catalog are Adjusted weights.

In order to use body composition EPD's or ultrasound data to its full potential, a breeder must have an understanding of the ultrasound terminology. Several of the ultrasound measurements are comparable to the familiar carcass measurements. The data is simply collected on yearling bulls and heifers instead of market ready steers. Take a step back from looking at the numbers and become comfortable with the terminology.

ULTRASOUND CARCASS MEASUREMENTS

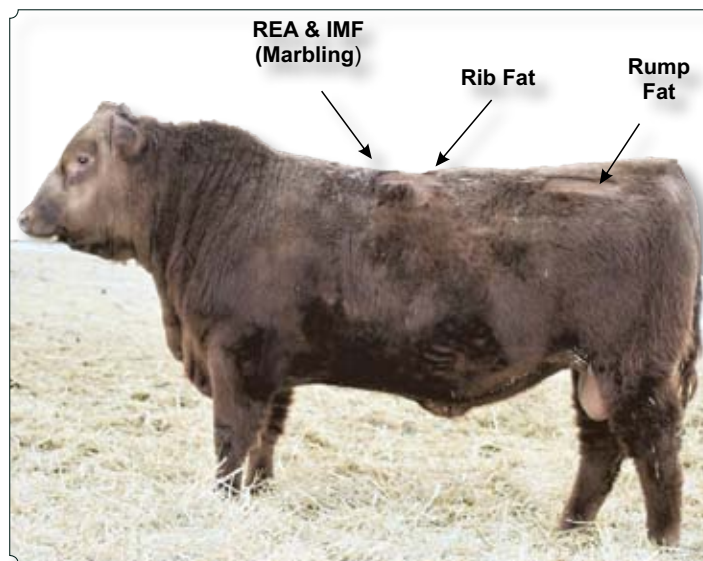
Rib Fat/Backfat: An external fat measurement taken between the 12th and 13th Reported in inches. Rib fat is the main trait that affects percent lean meat yield ie; A1, A2, A3, & A4. Percent lean meat yield is the calculation that estimates the percent of lean muscle on the carcass. For example, a lean meat yield of 60% on a 1000lb carcass would have 600lbs of lean muscle and 400lbs of bone and fat.

Ribeye Area (REA): An area measurement of the loin or ribeye muscle. Reported in square inches. While an increase in backfat will lower the percent lean meat yield an increase in REA will raise the percent lean meat yield.

Rump Fat: An external fat measurement taken from an image collected between the hooks and the pins of the animal. Reported in inches. The rump fat measurement, coupled with the rib fat measurement will increase the accuracy of percent lean meat yield.

Intramuscular Fat (%IMF)/ Marbling: This measurement determines the amount of fat within the muscle. Reported in "%". This measurement is used to determine the quality grade of the carcass.

CARCASS DATA



% IMF	(US QUALITY GRADE (CAN))	
2.3-3.0	SELECT -	AA -
3.1-3.9	SELECT +	AA +
4.0-5.7	CHOICE -	AAA -
5.8-7.6	CHOICE 0	AAA 0
7.7-9.7	CHOICE +	AAA +
9.8-12.1	PRIME -	PRIME -
12.2 +	PRIME 0	PRIME 0

CRESCENT CREEK SCOTSMAN 30A

Lot 1 MALE WOS 30A JANUARY 28 2013 1738046

R R SCOTCHCAP 9440 AMF NHF
E X A R SCOTCH CAP 816 AMF CAF NHF DDF
LEACHMAN BLACKCAP 2202

Sire: RR SCOTCHMAN 2999

R R FERDINAND 758D AMF CAF NHF DDF
ERICA LASSIE OF R R 8464
ERICA LASSIE OF R R 4580

WILLABAR AMBUSH 45G
LOOKOUT PACESETTER 258M
GRASSY LANES MILLY 29U

Dam: CRESCENT CREEK ROSEBUD 15U

SITZ HERITAGE 10709
CRESCENT CREEK ROSEBUD 6R
CRESCENT CREEK ROSEBUD 115F

BW	96 lbs
WW	732 lbs
YW	1229 lbs
CE	* *
BEPD	+3.3
WEPD	+48
YEPD	+81
Milk	+23
TM	+47

EPD'S:	REA: -0.19	Marb: +0.21	Fat: +0.027	Carcass Wt: +19
--------	------------	-------------	-------------	-----------------

ACTUAL:	REA: 14.3	Marb: 3.59	Fat: 0.33	LMY: 62.3%
---------	-----------	------------	-----------	------------

Selling 2/3 Interest and Full Possession. Crescent Creek retains full 1/3 interest.

Crescent Creek Rosebud 15U

Dam of Lot 1 Pick of the Herd 2013 by MWC Angus

SALE FEATURE

It only seemed fitting to start our offering with two outstanding young herd bull prospects.

It is somewhat of a tribute to a cow family that has done it all at our place. WOS 30A is the result of a mating of two of the most influential bloodlines here. "2999" & Rosebud can only be good. The young dam 15U has already produced 2 great herd bulls. It was inevitable that she would be the first pick out of our herd at \$15,000 from MWC Angus. Robin Selte knows how to make these Rosebuds work. The last time he latched on to one the result was over \$400,000 in value.

"2999" is now deceased but his influence will continue at Sheidaghan Angus and here. The bull with the "remarkable foot" lives on in this young bull.

Do check him out if you are interested in a sure thing.



Lot 1



Maternal Brother to Lot 1- Owned by 7Z Ranch



Maternal Brother to Lot 1- Owned by Shiedghan Angus

CRESCENT CREEK CHIZZLAR 10A

Lot 2 MALE WOS 10A JANUARY 20 2013 1738036

PAWS UP ALLIANCE 9561
S ALLIANCE 3313 AMF
PAWS UP 9048 EMULATION EXT

Sire: S CHISUM 6175 AMF CAF NHF

S ECLIPSE 169
S GLORIA 464
S GLORIA 209

SITZ ALLIANCE 6595
SITZ HERITAGE 10709
SITZ EMMA E 707

Dam: CRESCENT CREEK ROSEBUD 6R

RITO 8094 PRAIRIELANE 2060 AMF
CRESCENT CREEK ROSEBUD 115F
CRESCENT CREEK ROSEBUD 4C

BW	92 lbs
WW	789 lbs
YW	1411 lbs
CE	* *
BEPD	+2.9
WEPD	+61
YEPD	+108
Milk	+29
TM	+60

We are very proud of the herd bulls that have come out of this sale in 15 years. This year marks perhaps the most complete bull we have ever raised, mothered by the best cow to ever walk the pastures here.

"Rosebud" 6R was a never miss cow that rained "Elite" status on 7 calves with 113 ratio.

10A is all herd bull, true character and he shows it. If performance is your need then this is the bull. Average for birth, top 4% for weaning, top 3% for yearling, and top 1% for maternal & milk.

This bull calf gained over 450 lbs from Agribition to weigh date Feb 7th on a ration of 14 lbs of pellets. The Chisum cattle are what the beef business is about "efficient". 6R is now deceased this will be the last chance at a herd bull out of her.

EPD'S:	REA: +0.50	Marb: +0.27	Fat: +0.020	Carcass Wt: +49
--------	------------	-------------	-------------	-----------------

ACTUAL:	REA: 16.6	Marb: 3.84	Fat: 0.27	LMY: 66.1%
---------	-----------	------------	-----------	------------

Selling 2/3 Interest and Full Possession. Crescent Creek retains full 1/3 interest.

Check out his video online at www.crescentcreekangus.com

CRESCENT CREEK ROSEBUD 6R - Dam of Lot 2

SALE FEATURE



Lot 2



**CRESCENT CREEK TOMBOY 15W -
Maternal Brother of Lot 2 . Owned by
Bar CR Angus**



**WOS 101Y - Maternal
Brother of Lot 2 . Owned by
Tri Step Ranch**



**WOS 139X - Maternal
Brother of Lot 2 . Owned by
7Z Ranch**

CRESCENT CREEK ANGUS

CRESCENT CREEK CHISUM 2A

Lot 3 MALE WOS 2A JANUARY 13 2013 1738033

Sire: S CHISUM 6175 AMF CAF NHF

SITZ ALLIANCE 6595
CRESCENT CREEK ALLIANCE 29N
KBJ MISS COMPRESS 862K

Dam: CRESCENT CREEK BLACKBIRD 215T

DWAJO CHIEF 92E
CRESCENT CREEK BLACKBIRD 20P
CRESCENT CREEK BLACKBIRD 80E

BW	82 lbs
WW	691 lbs
YW	1248 lbs
CE	* * *
BEPD	+1.2
WEPD	+55
YEPD	+98
Milk	+25
TM	+53

EPD'S:	REA: +0.39	Marb: +0.14	Fat: +0.023	Carcass Wt: +41
--------	------------	-------------	-------------	-----------------

ACTUAL:	REA: 14.2	Marb: 2.35	Fat: 0.36	LMY: 62%
---------	-----------	------------	-----------	----------

The Chisum bulls in our last sale average \$5000 on 14 bulls. That was great, but best was that all but 2 went into commercial herds for the simple reason they are a cattle mans type of bulls. Thick made, easy doing, large testicles, and great disposition. After calving the first of our own daughters it is now evident that they are great young cows, more capacity than most with nice temperament and good udders.

2A will make a herd bull out of a never miss cow. The Chisum's will add growth & performance any herd.

Selling 2/3 Interest and Full Possession. Crescent Creek retains 1/3 semen interest.

SALE FEATURE



Crescent Creek Blackbird 215T
Dam of Lot 3

REFERENCE SIRE



S CHISUM 6175 AMF CAF NHF

MALE IMP 6175S MARCH 31 2006 1539796

SITZ ALLIANCE 6595 AMF NHF
PAWS UP ALLIANCE 9561

SITA EVERELDA ENTENSE 023

Sire: S ALLIANCE 3313 AMF

N BAR EMULATION EXT U2023

PAWS UP 9048 EMULATION EXT

M H R MISS RAINMAKER 1034

S S TRAVELER 6807 T510 AMF CAF NHF

S ECLIPSE 169

H L LADY TRAVELER 416

Dam: S GLORIA 464

LEACHMAN RIGHT TIME AMF

S GLORIA 209

S GLORIA 0118

BW	72 lbs
WW	838 lbs
YW	1436 lbs
CE	
BEPD	+2.9
WEPD	+69
YEPD	+119
Milk	+38
TM	+73



S CHISUM 6175 - 10 Sons Sell

EPD'S:	REA: +0.69	Marb: -0.02	Fat: -0.08	Carcass Wt: +55
--------	------------	-------------	------------	-----------------

Chisum has become the talk of the Angus breed, with awesome performance and carcass numbers. His progeny have excelled in many Angus herds. The Chisum calves here are outstanding. In last year's sale we had 14 sons that really stood out. This year there are 10 sons and 9 grandsons that will make you take notice.

This is one of the largest offerings of Chisum progeny to sell in Canada this year. In the four years we have used Chisum, we have in excess of 70 calves from him and they are the real thing. The females are broody yet feminine. The bulls are simply stout and full of muscle, with great dispositions. Those who made it to the sale last year were not disappointed in the Chisum bulls. There is no more semen in Canada for sale, other than that of which has risen ten times in value or controlled by a select few.

Here is your chance to buy progeny from a program which identifies the ones worthy for sale and is backed by a cow herd in the making for over 60 years. It will only cost the price of fuel to come see a set of exceptional cattle of which there are few to be found.

CRESCENT CREEK CHISUM 12A

Lot 4 MALE WOS 12A FEBRUARY 21 2013 1738099

Sire: S CHISUM 6175 AMF CAF NHF

WK GUNSMOKE
BORDER BUTTE SON OF A GUN 2'02
ALLEN CROFT JENNY 02 108G

Dam: DOUBLE D ROSEBUD 42P

RITO 8094 PRAIRIELANE 2060 AMF
CRESCENT CREEK ROSEBUD 26E
PRAIRIELANE 9001 ROSEBUD 2011

EPD'S:	REA: +0.33	Marb: +0.18	Fat: +0.012	Carcass Wt: +37
ACTUAL:	REA: 11.2	Marb: 2.89	Fat: 0.10	LMY: 65.3%

BW	90 lbs
WW	716 lbs
YW	1131 lbs
CE	* *
BEPD	+3.7
WEPD	+49
YEPD	+78
Milk	+24
TM	+49



Lot 4

CRESCENT CREEK CHISUM 18A

Lot 5 MALE TWIN WOS 18A JANUARY 23 2013 1738039

Sire: S CHISUM 6175 AMF CAF NHF

E X A R SCOTCH CAP 816
RR SCOTCHMAN 2999
ERICA LASSIE OF R R 8464

Dam: CRESCENT CREEK ROSEBUD 205T

DOUBLE BAR ROGUE CAF
CRESCENT CREEK ROSEBUD 38K
CRESCENT CREEK ROSEBUD 115F

EPD'S:	REA: +0.37	Marb: +0.14	Fat: +0.028	Carcass Wt: +49
ACTUAL:	REA: 13.5	Marb: 2.13	Fat: 0.20	LMY: 65.2%

BW	82 lbs
WW	607 lbs
YW	1117 lbs
CE	* *
BEPD	+3.2
WEPD	+60
YEPD	+102
Milk	+27
TM	+57



Lot 5

S CHISUM 6175 AMF

CRESCENT CREEK ANGUS

**CRESCENT CREEK CHISUM 24A**

MALE WOS 24A JANUARY 25 2013 1738041

Sire: S CHISUM 6175 AMF CAF NHF

O C C EMBLAZON 854E
 B C C-J C L EMBLAZON 038-287
 B C C 1531 ELDORENE 826-038

Dam: CRESCENT CREEK LADY ANN 21T

LLB NEW FRONTIER 81N
 NORSEMAN LADY ANN 4'05
 EARLY SUNSET LADY ANN 20N

BW	108 lbs
WW	790 lbs
YW	1347 lbs
CE	*
BEPD	+4.0
WEPD	+63
YEPD	+109
Milk	+21
TM	+53

Big volume Chisum son
 out of a hard working
 Emblazon daughter.
 If adding pounds at
 weaning and yearling,
 as well as breeding large
 frame cows is your need
 here is your bull.

*Lot 6*

EPD'S:	REA: +0.46	Marb: +0.09	Fat: +0.017	Carcass Wt: +36
--------	------------	-------------	-------------	-----------------

ACTUAL:	REA: 17.3	Marb: 3.11	Fat: 0.46	LMY: 61.5%
---------	-----------	------------	-----------	------------

SALE FEATURE**CRESCENT CREEK CHISUM 26A**

MALE WOS 26A JANUARY 26 2013 1738043

Sire: S CHISUM 6175 AMF CAF NHF

E X A R SCOTCH CAP 816
 RR SCOTCHMAN 2999
 ERICA LASSIE OF R R 8464

Dam: CRESCENT CREEK IDESSA 208T

S A F FAME AMF CAF NHF DDF
 S A V IDESSA 9109
 S A V IDESSA 7174

BW	100 lbs
WW	795 lbs
YW	1257 lbs
CE	*
BEPD	+4.2
WEPD	+65
YEPD	+102
Milk	+24
TM	+57

EPD'S:	REA: +0.42	Marb: +0.20	Fat: +0.041	Carcass Wt: +47
--------	------------	-------------	-------------	-----------------

ACTUAL:	REA: 12.6	Marb: 2.56	Fat: 0.23	LMY: 63.7%
---------	-----------	------------	-----------	------------

*Lot 7*

Another stout Chisum son out of an "Elite" Dam. A full brother is at Jim Cusitor at Roblyn.

CRESCENT CREEK CHISUM 27A

MALE WOS 27A JANUARY 26 2013 1738042

Sire: S CHISUM 6175 AMF CAF NHF

MINBURN MAIN EVENT 71N
 MINBURN MAIN EVENT 82R
 MINBURN JOY 34L

Dam: CRESCENT CREEK QUEEN RUTH 71T

RIVERSTOWN 2100 6Z
 CRESCENT CREEK QUEEN RUTH 59B
 CRESCENT CREEK QUEEN RUTH 14Z

BW	82 lbs
WW	733 lbs
YW	1195 lbs
CE	* * *
BEPD	+2.2
WEPD	+56
YEPD	+87
Milk	+26
TM	+54

EPD'S:	REA: +0.45	Marb: +0.08	Fat: +0.014	Carcass Wt: +34
--------	------------	-------------	-------------	-----------------

ACTUAL:	REA: 13.2	Marb: 3.09	Fat: 0.18	LMY: 65.5%
---------	-----------	------------	-----------	------------

Full brother sold to Thomas Simpson last year. Again out of an
 "Elite" Dam.

*Lot 8*

CRESCENT CREEK CHISUM 45A

MALE WOS 45A JANUARY 31 2013 1738052

Sire: S CHISUM 6175 AMF CAF NHFE X A R SCOTCH CAP 816
RR SCOTCHMAN 2999
ERICA LASSIE OF R R 8464**Dam: CRESCENT CREEK LADY BATE 98R**GDAR QUANTUM 963
CRESCENT CREEK LADY BATE 6N
CRESCENT CREEK LADY BATE 113H

BW	90 lbs
WW	678 lbs
YW	1271 lbs
CE	*
BEPD	+2.3
WEPD	+53
YEPD	+104
Milk	+26
TM	+53



EPD'S:	REA: +0.34	Marb: +0.17	Fat: +0.027	Carcass Wt: +45
--------	------------	-------------	-------------	-----------------

ACTUAL:	REA: 13.5	Marb: 1.98	Fat: 0.18	LMY: 65.6%
---------	-----------	------------	-----------	------------

SALE FEATURE**CRESCENT CREEK CHISUM 52A**

MALE WOS 52A FEBRUARY 01 2013 1738055

Sire: S CHISUM 6175 AMF CAF NHFGDAR SVF CHIEF
DWAJO CHIEF 92E
WICKLOW MISS LUCY 3C**Dam: CRESCENT CREEK QUEEN RUTH 72N**SUNMOUND ESTON 27F
CRESCENT CREEK QUEEN RUTH 4H
CRESCENT CREEK QUEEN RUTH 14Z

BW	90 lbs
WW	646 lbs
YW	1179 lbs
CE	*
BEPD	+3.0
WEPD	+51
YEPD	+92
Milk	+18
TM	+44

EPD'S:	REA: +0.41	Marb: +0.03	Fat: -0.008	Carcass Wt: +30
--------	------------	-------------	-------------	-----------------

ACTUAL:	REA: 11.7	Marb: 2.94	Fat: 0.18	LMY: 64.1%
---------	-----------	------------	-----------	------------

**CRESCENT CREEK CHISUM 58A**

MALE WOS 58A FEBRUARY 02 2013 1738061

Sire: S CHISUM 6175 AMF CAF NHFC H QUANTUM 3330
GDAR QUANTUM 963
G D A R MISS KEM 080**Dam: CRESCENT CREEK BLACKBIRD 184P**BOTANY ANGUS MAX 5A
CRESCENT CREEK BLACKBIRD 49E
CRESCENT CREEK BLACKBIRD 101Z

BW	84 lbs
WW	691 lbs
YW	1189 lbs
CE	* * *
BEPD	+1.1
WEPD	+51
YEPD	+85
Milk	+25
TM	+51

EPD'S:	REA: +0.42	Marb: +0.14	Fat: +0.024	Carcass Wt: +35
--------	------------	-------------	-------------	-----------------

ACTUAL:	REA: 11.9	Marb: 2.39	Fat: 0.27	LMY: 62%
---------	-----------	------------	-----------	----------



S CHISUM 6175 AMF

CRESCENT CREEK ANGUS

REFERENCE SIRE

**S CHISUM 0206**

MALE IMP 0206 MARCH 25 2010 1644448

PAWS UP ALLIANCE 9561
S ALLIANCE 3313 AMF
PAWS UP 9048 EMULATION EXT

Sire: S CHISUM 6175 AMF CAF NHF
S ECLIPSE 169
S GLORIA 464
S GLORIA 209

TC STOCKMAN 365
DUKE OF MOORE 121
DIVIDEND 33 OF MOORE J321

Dam: S VANNA 358
STEVENSON FORTUNE 425C
S VANNA 857
PREMIER MISS 9354D

BW	
WW	
YW	
CE	
BEPD	+4.5
WEPD	+41
YEPD	+71
Milk	+27
TM	+48

**S CHISUM 0206 . 9 Sons Sell~**

EPD'S:	REA: +0.56	Marb: +0.27	Fat: +0.012	Carcass Wt: +47
--------	------------	-------------	-------------	-----------------

0206 has left a remarkable set of calves here at Crescent Creek and our partners in the bull, Bar DK Angus. They have excellent hair, are very stout, with good feet and legs. They are more moderate than the grand sire but really push the scale down for their size. We anticipate to use the bull very heavy this upcoming season.

CRESCENT CREEK 0206 CHISUM 43A**Lot 12** MALE KOS 43A JANUARY 30 2013 1738029**Sire: S CHISUM 0206**

MINBURN MAIN EVENT 71N
MINBURN MAIN EVENT 82R
MINBURN JOY 34L

Dam: CRESCENT CREEK STUMPIE 8W
LOOKOUT PACESETTER 147L
FIGURE 8 ANGUS STUMPIE 12N
FIGURE 8 ANGUS STUMPIE 112K

The lead off bull for the 206 sons represents them well. He is very stout extra length, with great disposition. His mother is one of the prized Stumpie cows owned by our daughter Katie.

BW	104 lbs
WW	788 lbs
YW	1286 lbs
CE	*
BEPD	+6.3
WEPD	+51
YEPD	+78
Milk	+18
TM	+44

**Lot 12**

EPD'S:	REA: +0.21	Marb: +0.17	Fat: +0.012	Carcass Wt: +21
--------	------------	-------------	-------------	-----------------

ACTUAL:	REA: 14.0	Marb: 3.19	Fat: 0.24	LMY: 64.4%
---------	-----------	------------	-----------	------------

Katie told all her Facebook friends of her engagement to Austen Anderson of Anderson Cattle Co. Swan River Mb. We would now like to tell all our Angus friends. We look forward to their 2015 date, but not the "Stumpies" departing Crescent Creek.

CRESCENT CREEK 0206 CHISUM 49A

Lot 13 MALE WOS 49A FEBRUARY 01 2013 1738058

Sire: S CHISUM 0206

LOOKOUT PACESETTER 258M
CRESCENT CREEK PACESETTER 20T
CRESCENT CREEK BLACKBIRD 138N

Dam: CRESCENT CREEK EULA 98W

GDAR TRAVELER 235
CRESCENT CREEK EULA 131T
CRESCENT CREEK EULA 54M

BW	84 lbs
WW	639 lbs
YW	1060 lbs
CE	* *
BEPD	+1.5
WEPD	+36
YEPD	+60
Milk	+20
TM	+38

EPD'S:	REA: +0.17	Marb: +0.26	Fat: +0.008	Carcass Wt: +22
--------	------------	-------------	-------------	-----------------

ACTUAL:	REA: 11.5	Marb: 3.84	Fat: 0.18	LMY: 63.7%
---------	-----------	------------	-----------	------------

The 206 sons are all alike. Proud character, with lots of top and middle. His Dam is moderate framed Pacesetter daughters.



CRESCENT CREEK 0206 CHISUM 78A

Lot 14 MALE WMO 78A FEBRUARY 06 2013 1738025

Sire: S CHISUM 0206

RR SCOTCHMAN 2999
CRESCENT CREEK SCOTTY 55P
PRAIRIELANE 9001 ROSEBUD 2011

Dam: ALLANDALE QUEEN RUTH 1W

GDAR TRAVELER 235
CRESCENT CREEK QUEEN RUTH 95P
CRESCENT CREEK QUEEN RUTH 66M

BW	96 lbs
WW	675 lbs
YW	1172 lbs
CE	*
BEPD	+4.8
WEPD	+42
YEPD	+75
Milk	+19
TM	+40

One of Wade's pick of the bulls mostly because its his.

The dam has a picture perfect udder.



EPD'S:	REA: +0.24	Marb: +0.22	Fat: +0.015	Carcass Wt: +28
--------	------------	-------------	-------------	-----------------

ACTUAL:	REA: 12.8	Marb: 2.08	Fat: 0.20	LMY: 64.3%
---------	-----------	------------	-----------	------------

She produced a bull in last year's sale that sold to the Zuchkan brothers at Foam Lake. They have purchased here some real good heifer bulls for their heifer program. They have a very successful bred hfr sale every year in February.

CRESCENT CREEK 0206 CHISUM 97A

Lot 15 MALE WOS 97A FEBRUARY 10 2013 1738081

Sire: S CHISUM 6175 AMF CAF NHF

MINBURN MAIN EVENT 71N
MINBURN MAIN EVENT 82R
MINBURN JOY 34L

Dam: CRESCENT CREEK EULA 144U

DWAJO CHIEF 92E
CRESCENT CREEK EULA 94L
CRESCENT CREEK EULA 82A

BW	90 lbs
WW	710 lbs
YW	1160 lbs
CE	*
BEPD	+4.6
WEPD	+33
YEPD	+55
Milk	+15
TM	+32

EPD'S:	REA: -0.08	Marb: -0.10	Fat: -0.038	Carcass Wt: -6
--------	------------	-------------	-------------	----------------

ACTUAL:	REA: 12.0	Marb: 2.90	Fat: 0.17	LMY: 64.2%
---------	-----------	------------	-----------	------------



S CHISUM 0206

CRESCENT CREEK ANGUS

CRESCENT CREEK UPWARD 176A**Lot 16** MALE WMO 176A JANUARY 04 2013 1764846

PAWS UP ALLIANCE 9561
 S ALLIANCE 3313
 PAWS UP 9048 EMULATION EXT

Sire: SFL UP TOP 42Y

S ECLIPSE 169
 S GLORIA 464
 S GLORIA 209

LOOKOUT PACESETTER 258M
 S CHISUM 6175
 CRESCENT CREEK STUMPIE 9R

Dam: PARKWOOD QUEEN 2Y

BUSHES GRAND DESIGN
 PARKWOOD QUEEN 81U
 NEW FORCE QUEEN 81R

BW	85 lbs
WW	718 lbs
YW	1135 lbs
CE	
BEPD	+1.5
WEPD	+37
YEPD	+69
Milk	+21
TM	+40

**Lot 16**

EPD'S:	REA: +0.25	Marb: +0.13	Fat: +0.008	Carcass Wt: +25
--------	------------	-------------	-------------	-----------------

ACTUAL:	REA: 11.4	Marb: 1.88	Fat: 0.12	LMY: 64.9%
---------	-----------	------------	-----------	------------

CRESCENT CREEK 0206 CHISUM 122A**Lot 17** MALE KOS 122A FEBRUARY 14 2013 1738030**Sire: S CHISUM 0206**

B C C-J C L EMBLAZON 038-287
 CRESCENT CREEK EMBLAZON 07T
 CRESCENT CREEK ROSEBUD 10R

Dam: CRESCENT CREEK STUMPIE 96X

CRESCENT CREEK ALLIANCE 29N
 CRESCENT CREEK STUMPIE 9R
 FIGURE 8 ANGUS STUMPIE 12N

BW	86 lbs
WW	638 lbs
YW	1112 lbs
CE	* * *
BEPD	+3.2
WEPD	+39
YEPD	+71
Milk	+18
TM	+37

EPD'S:	REA: 0.31	Marb: 0.23	Fat: 0.016	Carcass Wt: 28
--------	-----------	------------	------------	----------------

ACTUAL:	REA: 11.4	Marb: 1.88	Fat: 0.12	LMY: 64.9%
---------	-----------	------------	-----------	------------

**Lot 17**

One of the easiest doing bulls in the offering real Angus character and again out of an excellent "Stumpie" cow.

CRESCENT CREEK 0206 CHISUM 130A**Lot 18** MALE DTZ 130A FEBRUARY 22 2013 1736158**Sire: S CHISUM 0206**

WANDERING CRK DYNASTY JRM 2F
 SILVER DOME DYNASTY 19T
 SILVER DOME OAKLEAF 119L

Dam: CRESCENT CREEK ERROLLINE 184X

RR SCOTCHMAN 2999
 CRESCENT CREEK ERROLLINE 52S
 CRESCENT CREEK ERROLLINE 56L

BW	96 lbs
WW	719 lbs
YW	1229 lbs
CE	* *
BEPD	+4.7
WEPD	+40
YEPD	+75
Milk	+22
TM	+42

EPD'S:	REA: +0.20	Marb: +0.24	Fat: +0.033	Carcass Wt: +26
--------	------------	-------------	-------------	-----------------

ACTUAL:	REA: 11.3	Marb: 2.33	Fat: 0.22	LMY: 62.3%
---------	-----------	------------	-----------	------------



CRESCENT CREEK STUMPIE 96X
 Dam of Lot 17

CRESCENT CREEK 0206 CHISUM 131A

Lot 19 MALE WOS 131A FEBRUARY 22 2013 1738100

Sire: S CHISUM 0206

BOYD NEW DAY 8005 AMF CAF NHF DDF
GDAR GAME DAY 449 AMF CAF NHF DDF
G D A R MISS WIX 474

Dam: GDAR BLACKCAP LADY 980

SITZ NEW DESIGN 349M AMF CAF NHF
GDAR BLACKCAP LADY 786
GDAR BLACKCAP LADY 5494

EPD'S:	REA: +0.73	Marb: +0.44	Fat: +0.044	Carcass Wt: +31
--------	------------	-------------	-------------	-----------------

ACTUAL:	REA: 11.8	Marb: 2.53	Fat: 0.20	LMY: 63.2%
---------	-----------	------------	-----------	------------

BW	88 lbs
WW	659 lbs
YW	1097 lbs
CE	* *
BEPD	+2.7
WEPD	+43
YEPD	+78
Milk	+26
TM	+48

From top to bottom a very uniform set of easy doing Chisum grandsons. These bulls should breed for a long time as they are flawless in their type and structure. 131 A's Dam is moderate framed game day daughter that is doing very well here.



CRESCENT CREEK 0206 CHISUM 133A

Lot 20 MALE WOS 133A FEBRUARY 23 2013 1738101

Sire: S CHISUM 0206

SITZ ALLIANCE 6595
CRESCENT CREEK ALLIANCE 29N
KBJ MISS COMPRESS 862K

Dam: CRESCENT CREEK ROSEBUD 203T

RR SCOTCHMAN 2999
CRESCENT CREEK ROSEBUD 97P
CRESCENT CREEK ROSEBUD 96M

EPD'S:	REA: +0.25	Marb: +0.17	Fat: +0.034	Carcass Wt: +34
--------	------------	-------------	-------------	-----------------

ACTUAL:	REA: 12.2	Marb: 3.02	Fat: 0.21	LMY: 63%
---------	-----------	------------	-----------	----------

BW	96 lbs
WW	713 lbs
YW	1246 lbs
CE	*
BEPD	+4.3
WEPD	+44
YEPD	+81
Milk	+20
TM	+42



*Congratulations Katie & Austin
Anderson, Anderson Cattle
Co., Swan River on your recent
engagement. The Angus industry is
in good hands with capable young
breeders like yourselves.*



S CHISUM 0206

CRESCENT CREEK ANGUS

REFERENCE SIRE



CRESCENT CREEK PACESETTER 16U

MALE KOS 16U JANUARY 18 2008 1435898

PARAMONT AMBUSH 2172 AMF CAF NHF
WILLABAR AMBUSH 45G
WILLABAR COUNTESS 90A

Sire: LOOKOUT PACESETTER 258M

ED RENE EILEENMERE 45P
GRASSY LANES MILLY 29U
GRASSY LANES MILLY 37S

SITZ ALLIANCE 6595 AMF NHF
CRESCENT CREEK ALLIANCE 29N
KBJ MISS COMPRESS 862K

Dam: CRESCENT CREEK STUMPIE 9R

LOOKOUT PACESETTER 147L
FIGURE 8 ANGUS STUMPIE 12N
FIGURE 8 ANGUS STUMPIE 112K

B Wt	70 lbs
205 Wt	614 lbs
365 Wt	1085 lbs
C Ease	
BEPD	-1.3
WEPD	+33
YEPD	+34
Milk	+11
TM	+28
Scrotal	---



CRESCENT CREEK PACESETTER 16U
. 15 Sons Sell

EPD'S:	REA: -0.13	Marb: -0.19	Fat: +0.010	Carcass Wt: -9
--------	------------	-------------	-------------	----------------

This bull has become a cornerstone herd bull here. He has left a set of young females that will become the backbone of our herd, moderate in frame and loads of capacity. He himself at 7 years of age has a perfect foot and keeps condition. "Pacesetter" is a cowmans bull, no hassle easy doing leaving an excellent set of calves year in and year out. If calving ease and maternal traits are your need then we highly recommend his sons. He himself is in the top 1% for birth weight and top 3% for maternal calving ease in the Canadian Angus Performance Program. It doesn't get any better than that. Take your pick they are all alike.

CRESCENT CREEK PACESETTER 37A

Lot 21 MALE WOS 37A JANUARY 30 2013 1738049

Sire: CRESCENT CREEK PACESETTER 16U

MINBURN MAIN EVENT 71N
MINBURN MAIN EVENT 82R
MINBURN JOY 34L

Dam: CRESCENT CREEK QUEEN RUTH 56T

CRESCENT CREEK REVIVAL 06J
CRESCENT CREEK QUEEN RUTH 66M
TRAILVIEW EMPIRE PRIDE 127'96

BW	90 lbs
WW	745 lbs
YW	1112 lbs
CE	*
BEPD	+2.8
WEPD	+47
YEPD	+61
Milk	+13
TM	+37

EPD'S:	REA: -0.08	Marb: -0.06	Fat: +0.005	Carcass Wt: -1
ACTUAL:	REA: 11.1	Marb: 1.57	Fat: 0.11	LMY: 65.4%



Lot 21

The perfect replica of his sire. Big crest hard muscled bull. His dam is an excellent Main Event daughter who has produced well.

CRESCENT CREEK PACESETTER 39A

Lot 22 MALE WOS 39A JANUARY 30 2013 1738051

Sire: CRESCENT CREEK PACESETTER 16U

RR SCOTCHMAN 2999
CRESCENT CREEK IMAGERY 116P
CRESCENT CREEK DUCHESS 51M

Dam: KBJ MISS COMPRESS 315T

MINBURN MAIN EVENT 50M
KBJ MISS COMPRESS 862R
EVERBLACK MISS COMPRESS 98G

BW	84 lbs
WW	572 lbs
YW	1034 lbs
CE	* * *
BEPD	+0.2
WEPD	+34
YEPD	+57
Milk	+10
TM	+27

EPD'S:	REA: -0.21	Marb: -0.02	Fat: +0.018	Carcass Wt: +4
ACTUAL:	REA: 11.6	Marb: 4.01	Fat: 0.23	LMY: 62.8%



Lot 22

CRESCENT CREEK PACESETTER 62A

Lot 23 MALE WOS 62A FEBRUARY 03 2013 1738066

Sire: CRESCENT CREEK PACESETTER 16U

C H QUANTUM 3330
GDAR QUANTUM 963
G D A R MISS KEM 080

Dam: CRESCENT CREEK ROSEBUD 70M

DOUBLE BAR ROGUE CAF
CRESCENT CREEK ROSEBUD 38K
CRESCENT CREEK ROSEBUD 115F

BW	84 lbs
WW	721 lbs
YW	1159 lbs
CE	* * *
BEPD	-0.1
WEPD	+34
YEPD	+53
Milk	+15
TM	+32

EPD'S:	REA: -0.14	Marb: -0.05	Fat: +0.002	Carcass Wt: +2
ACTUAL:	REA: 11.4	Marb: 2.47	Fat: 0.20	LMY: 63.1%



CRESCENT CREEK PACESETTER 67A

Lot 24 MALE WOS 67A FEBRUARY 04 2013 1738072

Sire: CRESCENT CREEK PACESETTER 16U

C A R IDEAL 650
CAR IDEAL 061
C A R MISS VIKING 601

Dam: CRESCENT CREEK HEROINE 34T

RITO 8094 PRAIRIELANE 2060 AMF
CRESCENT CREEK HEROINE 68F
CRESCENT CREEK HEROINE 81C

BW	98 lbs
WW	751 lbs
YW	1213 lbs
CE	*
BEPD	+3.9
WEPD	+43
YEPD	+60
Milk	+16
TM	+38

EPD'S:	REA: -0.25	Marb: -0.02	Fat: +0.001	Carcass Wt: +0
ACTUAL:	REA: 11.2	Marb: 2.64	Fat: 0.23	LMY: 62.2%



Dam is an "Elite" cow under the Canadian Angus Performance program. To sum the program up it says that these cows bring in the best calves year after year. There is certain criteria they must meet.

CRESCENT CREEK PACESETTER 84A

Lot 25 MALE WOS 84A FEBRUARY 07 2013 1738076

Sire: CRESCENT CREEK PACESETTER 16U

C A R IDEAL 650
CAR IDEAL 061
C A R MISS VIKING 601

Dam: CRESCENT CREEK EULA 11S

DWAJO CHIEF 92E
CRESCENT CREEK EULA 63H
CRESCENT CREEK EULA 82A

BW	96 lbs
WW	697 lbs
YW	1123 lbs
CE	*
BEPD	+2.5
WEPD	+34
YEPD	+47
Milk	+17
TM	+34

EPD'S:	REA: -0.09	Marb: -0.08	Fat: -0.007	Carcass Wt: -2
ACTUAL:	REA: 12.8	Marb: 3.16	Fat: 0.15	LMY: 65.6%



Dam is an "Elite" cow under the Canadian cow, the Eula cow family is a foundation cow family here. MWC also picked a Eula (WOS 139T) as their second \$15,000 pick of the herd thru the Masterpiece sale at 2013 Agribition.

Dam of Lot 25
CRESCENT CREEK EULA 11S



CRESCENT CREEK PACESETTER 85A

Lot 26 MALE WOS 85A FEBRUARY 07 2013 1760247

Sire: CRESCENT CREEK PACESETTER 16U

WILLABAR AMBUSH 45G
LOOKOUT PACESETTER 258M
GRASSY LANES MILLY 29U

Dam: CRESCENT CREEK MARGARET 15S

RRD FAME 1K
CRESCENT CREEK MARGARET 21M
CRESCENT CREEK MARGARET 37J

EPD'S:	REA: -0.12	Marb: +0.03	Fat: +0.004	Carcass Wt: -6
--------	------------	-------------	-------------	----------------

ACTUAL:	REA: 11.0	Marb: 2.02	Fat: 0.13	LMY: 64.4%
---------	-----------	------------	-----------	------------

BW	80 lbs
WW	606 lbs
YW	938 lbs
CE	* * *
BEPD	+0.0
WEPD	+31
YEPD	+37
Milk	+10
TM	+26



Lot 26

CRESCENT CREEK PACESETTER 99A

Lot 27 MALE DTZ 99A FEBRUARY 11 2013 1760245

Sire: CRESCENT CREEK PACESETTER 16U

E X A R SCOTCH CAP 816
RR SCOTCHMAN 2999
ERICA LASSIE OF R R 8464

Dam: CRESCENT CREEK HEROINE 0135S

RON'S STEMWINDER 74J
CRESCENT CREEK HEROINE 13L
CRESCENT CREEK HEROINE 8D

EPD'S:	REA: -0.16	Marb: -0.06	Fat: +0.019	Carcass Wt: +5
--------	------------	-------------	-------------	----------------

ACTUAL:	REA: 11.6	Marb: 2.49	Fat: 0.27	LMY: 61.3%
---------	-----------	------------	-----------	------------

BW	86 lbs
WW	679 lbs
YW	1201 lbs
CE	* * *
BEPD	+0.7
WEPD	+37
YEPD	+62
Milk	+15
TM	+34



Lot 27

CRESCENT CREEK PACESETTER 102A

Lot 28 MALE WOS 102A FEBRUARY 13 2013 1738088

Sire: CRESCENT CREEK PACESETTER 16U

MINBURN MAIN EVENT 71N
MINBURN MAIN EVENT 82R
MINBURN JOY 34L

Dam: CRESCENT CREEK ROSEBUD 19T

RR SCOTCHMAN 2999
CRESCENT CREEK ROSEBUD 52P
CRESCENT CREEK ROSEBUD 42M

EPD'S:	REA: -0.12	Marb: -0.07	Fat: +0.009	Carcass Wt: +3
--------	------------	-------------	-------------	----------------

ACTUAL:	REA: 12.1	Marb: 3.03	Fat: 0.18	LMY: 64.1%
---------	-----------	------------	-----------	------------

BW	82 lbs
WW	675 lbs
YW	1161 lbs
CE	* * *
BEPD	+1.1
WEPD	+36
YEPD	+57
Milk	+16
TM	+36



Lot 28

CRESCENT CREEK PACESETTER 109A

Lot 29 MALE WOS 109A FEBRUARY 16 2013 1738091

Sire: CRESCENT CREEK PACESETTER 16U

C H QUANTUM 3330
GDAR QUANTUM 963
G D A R MISS KEM 080

Dam: CRESCENT CREEK BLACKBIRD 138N

WAVY RITO 6G
CRESCENT CREEK BLACKBIRD 126J
CRESCENT CREEK BLACKBIRD 24C

EPD'S:	REA: -0.21	Marb: +0.07	Fat: +0.012	Carcass Wt: -3
--------	------------	-------------	-------------	----------------

ACTUAL:	REA: 11.9	Marb: 2.16	Fat: 0.16	LMY: 64.2%
---------	-----------	------------	-----------	------------

BW	88 lbs
WW	674 lbs
YW	1148 lbs
CE	* * *
BEPD	+0.1
WEPD	+37
YEPD	+60
Milk	+13
TM	+32



Lot 29

CRESCENT CREEK PACESETTER 111A

Lot 30 MALE WOS 111A FEBRUARY 16 2013 1738092

Sire: CRESCENT CREEK PACESETTER 16U

C H QUANTUM 3330
GDAR QUANTUM 963
G D A R MISS KEM 080

Dam: CRESCENT CREEK QUEEN RUTH 159P

RIVERSTOWN 2100 6Z
CRESCENT CREEK QUEEN RUTH 59B
CRESCENT CREEK QUEEN RUTH 14Z

BW	90 lbs
WW	776 lbs
YW	1251 lbs
CE	* *
BEPD	+0.8
WEPD	+38
YEPD	+56
Milk	+17
TM	+36

EPD'S:	REA: -0.07	Marb: -0.09	Fat: -0.002	Carcass Wt:-5
--------	------------	-------------	-------------	---------------

ACTUAL:	REA: 12.5	Marb: 3.05	Fat: 0.16	LMY: 64.7%
---------	-----------	------------	-----------	------------



Again the dam is an "Elite" cow from the original Queen Ruth cow Family.

Dam of Lot 30

CRESCENT CREEK QUEEN RUTH 159P



CRESCENT CREEK PACESETTER 113A

Lot 31 MALE WOS 113A FEBRUARY 17 2013 1738093

Sire: CRESCENT CREEK PACESETTER 16U

TLA PRIDE'S REVIVAL 85G
CRESCENT CREEK REVIVAL 06J
CRESCENT CREEK QUEEN RUTH 14Z

Dam: CRESCENT CREEK ROSEBUD 187N

BOTANY ANGUS MAX 5A
CRESCENT CREEK ROSEBUD 30D
CRESCENT CREEK ROSEBUD 43Z

BW	88 lbs
WW	696 lbs
YW	1146 lbs
CE	* *
BEPD	+2.5
WEPD	+45
YEPD	+64
Milk	+9
TM	+32

EPD'S:	REA: -0.26	Marb: -0.10	Fat: +0.008	Carcass Wt:-1
--------	------------	-------------	-------------	---------------

ACTUAL:	REA: 12.2	Marb: 4.33	Fat: 0.30	LMY: 60.8%
---------	-----------	------------	-----------	------------



CRESCENT CREEK PACESETTER 114A

Lot 32 MALE WOS 114A FEBRUARY 17 2013 1738094

Sire: CRESCENT CREEK PACESETTER 16U

O C C TRAVELER 723Z
GDAR TRAVELER 235
GDAR PRIMROSE 0251

Dam: CRESCENT CREEK EULA 124R

RITO 8094 PRAIRIELANE 2060 AMF
CRESCENT CREEK BARANDA 132G
CRESCENT CREEK BARANDA 7C

BW	90 lbs
WW	649 lbs
YW	1123 lbs
CE	*
BEPD	+2.1
WEPD	+36
YEPD	+55
Milk	+12
TM	+30

EPD'S:	REA: -0.25	Marb: -0.03	Fat: +0.012	Carcass Wt: +0
--------	------------	-------------	-------------	----------------

ACTUAL:	REA: 12.6	Marb: 2.05	Fat: 0.12	LMY: 65.8%
---------	-----------	------------	-----------	------------



CRESCENT CREEK PACESSETTER 117A

Lot 33 MALE DTZ 117A FEBRUARY 19 2013 1736156

Sire: CRESCENT CREEK PACESSETTER 16U

C H QUANTUM 3330
GDAR QUANTUM 963
G D A R MISS KEM 080

Dam: CRESCENT CREEK LADY BATE 6N

BOTANY ANGUS MAX 5A
CRESCENT CREEK LADY BATE 113H
CRESCENT CREEK LADY BATE 48Y

EPD'S:	REA: -0.23	Marb: -0.01	Fat: +0.000	Carcass Wt: -2
--------	------------	-------------	-------------	----------------

ACTUAL:	REA: 13.3	Marb: 2.19	Fat: 0.13	LMY: 66.2%
---------	-----------	------------	-----------	------------

BW	92 lbs
WW	673 lbs
YW	1195 lbs
CE	* *
BEPD	+0.6
WEPD	+32
YEPD	+59
Milk	+14
TM	+30



Lot 33

CRESCENT CREEK PACESSETTER 120A

Lot 34 MALE WOS 120A FEBRUARY 19 2013 1738096

Sire: CRESCENT CREEK PACESSETTER 16U

GEIS MAXIMUM 26'95
GEIS MAXIMUM 80'01
GEIS RUBY 185'96

Dam: CRESCENT CREEK LADY BATE 141S

MINBURN ROGUE 37H
DRYLAND LADY BATE 147
CRESCENT CREEK LADY BATE 44E

EPD'S:	REA: -0.19	Marb: -0.06	Fat: +0.018	Carcass Wt: +0
--------	------------	-------------	-------------	----------------

ACTUAL:	REA: 11.4	Marb: 2.64	Fat: 0.18	LMY: 63.3%
---------	-----------	------------	-----------	------------

BW	94 lbs
WW	692 lbs
YW	1190 lbs
CE	*
BEPD	+3.4
WEPD	+37
YEPD	+62
Milk	+17
TM	+36



Lot 34

CRESCENT CREEK PACESSETTER 138A

Lot 35 MALE DTZ 138A FEBRUARY 25 2013 1736159

Sire: CRESCENT CREEK PACESSETTER 16U

E X A R SCOTCH CAP 816
RR SCOTCHMAN 2999
ERICA LASSIE OF R R 8464

Dam: CRESCENT CREEK DANA 122T

CRESCENT CREEK CHIEF 80G
CRESCENT CREEK DANA 35M
TERRLENE DANA 32A

EPD'S:	REA: -0.10	Marb: -0.04	Fat: +0.011	Carcass Wt: +6
--------	------------	-------------	-------------	----------------

ACTUAL:	REA: 11.5	Marb: 2.19	Fat: 0.18	LMY: 63.2%
---------	-----------	------------	-----------	------------

BW	88 lbs
WW	709 lbs
YW	1195 lbs
CE	* * *
BEPD	+0.6
WEPD	+39
YEPD	+60
Milk	+16
TM	+36



Lot 35

*Online Bidding & Videos of
every lot on our website.....
www.crescentcreekangus.com*

SALE BROADCAST BY:



WWW.CATTLEINMOTION.COM

REFERENCE SIRE



MC CUMBER 8R101 RITO 1136

MALE IMP 1136Y FEBRUARY 08 2011 1711872

RITO N BAR

R R RITO 707 AMF CAF NHF DDF

ERISKAY OF ROLLIN ROCK 3

Sire: SINCLAIR ENTREPRENEUR 8R101

N BAR EMULATION EXT

N BAR KINCHTRY BEAUTY Z1925

N BAR KINCHTRY BEAUTY 4310

N BAR EMULATION EXT

SITZ JLS EMULATION EXT 536P

IDEAL 4465 OF 6807 4286 AMF NHF

Dam: MISS WIX 7176 OF MC CUMBER

BT RIGHT TIME 24J AMF CAF NHF DDF

MISS WIX 364 OF MC CUMBER

MISS WIX 9131 OF MC CUMBER

B Wt	92 lbs
205 Wt	lbs
365 Wt	lbs
C Ease	
BEPD	+3.3
WEPD	+37
YEPD	+69
Milk	+19
TM	+38



MC CUMBER 8R101 RITO 1136

6 Sons Sell

EPD'S:	REA: +0.26	Marb: -0.06	Fat: +0.015	Carcass Wt: +29
--------	------------	-------------	-------------	-----------------

When we were sourcing new out cross genetics we went back to some of the most proven genetics in the Angus breed, the "Rito" line. These were cattle that had extra muscling ability and were widely accepted. Our source would be the McCumber Ranch Program largely because of the excellent set of cows they had. All of which were of a total outcross to our herd. Our selection was 1136 mainly because I think his mother could very well be one of the best cows in the herd. 1136 has done an excellent job here.



SINCLAIR ENTREPRENEUR 8R101



MISS WIX 7176 OF MC CUMBER

CRESCENT CREEK ENTREPRENEUR105A

Lot 36 MALE DTZ 105A FEBRUARY 15 2013 1759306

Sire: MC CUMBER 8R101 RITO 1136

MINBURN MAIN EVENT 71N

MINBURN MAIN EVENT 82R

MINBURN JOY 34L

Dam: CRESCENT CREEK HEROINE 119U

RON'S STEMWINDER 74J

CRESCENT CREEK HEROINE 13L

CRESCENT CREEK HEROINE 8D

When you purchase a new herd bull or try some AI the anticipation of the results are always exciting. Exciting was the results of "1136". His total outcross pedigree to our herd seemed to really click. 105A is an outstanding young herd bull offering many an alternative to what is out there now. His extra length and huge rear quarter, and wide top will impress you at once.

BW	86 lbs
WW	750 lbs
YW	1242 lbs
CE	* *
BEPD	+2.9
WEPD	+42
YEPD	+69
Milk	+16
TM	+37



Lot 36

His Angus character and eye appeal is second to none. We feel this young bull could make a difference to a lot of programs. Fresh genetics backed by one of the original cow families here. Assure that this bull could be special.

EPD'S:	REA: +0.09	Marb: -0.05	Fat: +0.015	Carcass Wt: +13
ACTUAL:	REA: 14.2	Marb: 2.88	Fat: 0.34	LMY: 61.7%

Selling 1/2 interest and shared possession, or double up and take the entire bull.

MC CUMBER 8R101 RITO 1136

CRESCENT CREEK ANGUS

CRESCENT CREEK RITO 145A

Lot 37 MALE WOS 145A JANUARY 03 2013 1759300

Sire: MC CUMBER 8R101 RITO 1136

WILLABAR AMBUSH
LOOKOUT PACESETTER 258M
GRASSY LANES MILLY 29U

Dam: CRESCENT CREEK ROSEBUD 4U

RITO 8094 PRAIRIELANE 2060
CRESCENT CREEK ROSEBUD 115F
CRESCENT CREEK ROSEBUD 4C

Again another exciting "1136" son that shows extra muscle and length. The entire calf crop from this young herd sire is very impressive. 145 A's dam is a direct daughter of the very prolific Rosebud 115F. If muscle and thickness in a moderate frame is your need the 1136 sons are unique.

BW	90 lbs
WW	810 lbs
YW	1250 lbs
CE	*
BEPD	+2.4
WEPD	+45
YEPD	+73
Milk	+18
TM	+41



SALE FEATURE

Selling 2/3 Interest and Full Possesion. Crescent Creek retains 1/3 semen interst.

EPD'S:	REA: +0.01	Marb: -0.03	Fat: +0.008	Carcass Wt:
--------	------------	-------------	-------------	-------------

ACTUAL:	REA: 13.8	Marb: 2.03	Fat: 0.27	LMY: 62.6%
---------	-----------	------------	-----------	------------

CRESCENT CREEK RITO 81A

Lot 38 MALE WOS 81A FEBRUARY 07 2013 1759309

Sire: MC CUMBER 8R101 RITO 1136

MINBURN MAIN EVENT 71N
MINBURN MAIN EVENT 82R
MINBURN JOY 34L

Dam: CRESCENT CREEK ERICA 150U

TRAVELER 3173 G D A R
HILOW ERICA 32D
HILOW ERICA 2B

As you evaluate the 1136 sons you will come to see the bull leaves a definite stamp to his calves. We are very pleased with this bull as he has left another great calf crop again this year.

BW	78 lbs
WW	623 lbs
YW	1181 lbs
CE	* * *
BEPD	+0.4
WEPD	+33
YEPD	+67
Milk	+18
TM	+35



SALE FEATURE

Selling 2/3 Interest and Full Possesion. Crescent Creek retains 1/3 semen interst.

EPD'S:	REA: +0.14	Marb: -0.02	Fat: +0.014	Carcass Wt: +14
--------	------------	-------------	-------------	-----------------

ACTUAL:	REA: 13.1	Marb: 3.14	Fat: 0.27	LMY: 62.8%
---------	-----------	------------	-----------	------------

Lot 39

CRESCENT CREEK RITO 79A

MALE WOS 79A FEBRUARY 06 2013 1759311

Sire: MC CUMBER 8R101 RITO 1136

B C C-J C L EMBLAZON 038-287
BRONYX EMBLAZON 58T
CRESCENT CREEK ROSEBUD 25R

Dam: CRESCENT CREEK ROSEBUD 27W

RR SCOTCHMAN 2999
CRESCENT CREEK ROSEBUD 14R
CRESCENT CREEK ROSEBUD 43Z

EPD'S:	REA: +0.23	Marb: +0.02	Fat: +0.021	Carcass Wt: +24
--------	------------	-------------	-------------	-----------------

ACTUAL:	REA: 12.1	Marb: 3.69	Fat: 0.18	LMY: 64.3%
---------	-----------	------------	-----------	------------

BW	98 lbs
WW	648 lbs
YW	1217 lbs
CE	*
BEPD	+4.9
WEPD	+41
YEPD	+81
Milk	+17
TM	+38



Lot 40

CRESCENT CREEK ENTREPENEUR 129A

MALE WOS 129A FEBRUARY 22 2013 1759301

Sire: MC CUMBER 8R101 RITO 1136

MINBURN MAIN EVENT 71N
MINBURN MAIN EVENT 82R
MINBURN JOY 34L

Dam: CRESCENT CREEK PRIDE 21U

CRESCENT CREEK REVIVAL 06J
CRESCENT CREEK PRIDE 25L
CRESCENT CREEK PRIDE 10E

EPD'S:	REA: +0.13	Marb: -0.02	Fat: +0.011	Carcass Wt: +15
--------	------------	-------------	-------------	-----------------

ACTUAL:	REA: 11.2	Marb: 2.98	Fat: 0.28	LMY: 60.6%
---------	-----------	------------	-----------	------------

BW	90 lbs
WW	638 lbs
YW	1130 lbs
CE	*
BEPD	+4.3
WEPD	+36
YEPD	+66
Milk	+14
TM	+32



Lot 41

CRESCENT CREEK RITO 132A

MALE WOS 132A FEBRUARY 23 2013 1763806

Sire: MC CUMBER 8R101 RITO 1136

E X A R SCOTCH CAP 816 AMF
RR SCOTCHMAN 2999
ERICA LASSIE OF R R 8464

Dam: CRESCENT CREEK HEROINE 195U

SASKALTA BARDOLINE 61F
CRESCENT CREEK HEROINE 62J
CRESCENT CREEK HEROINE 8D

EPD'S:	REA: +0.09	Marb: -0.06	Fat: +0.025	Carcass Wt: +24
--------	------------	-------------	-------------	-----------------

ACTUAL:	REA: 12.2	Marb: 3.55	Fat: 0.18	LMY: 63.8%
---------	-----------	------------	-----------	------------

BW	92 lbs
WW	674 lbs
YW	1149 lbs
CE	* *
BEPD	+4.0
WEPD	+41
YEPD	+76
Milk	+20
TM	+41



MC CUMBER 8R101 RITO 1136

CRESCENT CREEK ANGUS

REFERENCE SIRE



CRESCENT CREEK TOMBOY 15W

MALE WOS 15W JANUARY 21 2009 1491311

ADELPHI TOM BOY 20H
FIGURE 8 ANGUS TOM BOY 509R
FIGURE 8 ANGUS LADY 604J

Sire: LOOKOUT HUCK 53T

GDAR RUSS 896
LOOKOUT EDNA 145L
KBJ EDNA 432H

SITZ ALLIANCE 6595 AMF NHF
SITZ HERITAGE 10709
SITZ EMMA E 707

Dam: CRESCENT CREEK ROSEBUD 6R

RITO 8094 PRAIRIELANE 2060 AMF
CRESCENT CREEK ROSEBUD 115F
CRESCENT CREEK ROSEBUD 4C

B Wt	90 lbs
205 Wt	773 lbs
365 Wt	1336 lbs
C Ease	
BEPD	+2.5
WEPD	+44
YEPD	+75
Milk	+20
TM	+42
Scrotal	---

EPD'S:	REA: +0.23	Marb: +0.32	Fat: +0.019	Carcass Wt: +18
--------	------------	-------------	-------------	-----------------



CRESCENT CREEK TOMBOY 15W 3 Sons Sell

15W was the lead off bull in our 2010 sale where he commanded a lot of attention from some very astute breeders. At the end of the day Bar CR angus purchased a 1/3 interest for \$26,500.00. Since then this bull has certainly proved himself worthy. As seen in his picture he has become a true breeding bull.

He shows as much muscle and capacity as any bull out there. His sons are easy to find in the pen. Proud in character, chucked full of red meat His pedigree is proven and predictable.

Moderate birth weight with all the performance you need, and backed up by a super cow family. This year we offer an excellent set of females out of this bull.

CRESCENT CREEK BARDOLIER 34A

Lot 42 MALE DTZ 34A JANUARY 29 2013 1736150

Sire: CRESCENT CREEK TOMBOY 15W

FINKS 5522-6148
TEHAMA RIVERBEND 802 AMF
TEHAMA ENTELLA D541

Dam: CRESCENT CREEK ERROLLINE 27R

CRESCENT CREEK CHIEF 80G
CRESCENT CREEK EROLLINE 56L
KBJ EUGENIE 287G

BW	99 lbs
WW	705 lbs
YW	1137 lbs
CE	*
BEPD	+5.6
WEPD	+44
YEPD	+73
Milk	+16
TM	+38

EPD'S:	REA: +0.30	Marb: +0.28	Fat: -0.008	Carcass Wt: +12
--------	------------	-------------	-------------	-----------------

ACTUAL:	REA: 12.8	Marb: 3.36	Fat: 0.14	LMY: 66%
---------	-----------	------------	-----------	----------

These are bulls with exceptional muscle and meat. The 15W bull excels in producing females. If maternal strength is your wish, these fellows come highly recommended



Lot 42

CRESCENT CREEK BARDOLIER 123A

Lot 43

MALE WOS 123A FEBRUARY 02 2013 1738063

Sire: CRESCENT CREEK TOMBOY 15W

CRESCENT CREEK CHIEF 22G
FCR CHIEF ADVISOR 12M
RON'S BELLE 45J

Dam: FCR RIGHT TIME LUCY 82R

LEACHMAN RIGHT TIME DMF AMF
FCR RIGHT TIME LUCY 23N
BATSCOL LUCY 1F

BW	88 lbs
WW	696 lbs
YW	1129 lbs
CE	* *
BEPD	+2.1
WEPD	+41
YEPD	+68
Milk	+15
TM	+36

EPD'S:	REA: +0.05	Marb: +0.11	Fat: -0.004	Carcass Wt: +9
--------	------------	-------------	-------------	----------------

ACTUAL:	REA: 12.9	Marb: 2.84	Fat: 0.18	LMY: 64.9%
---------	-----------	------------	-----------	------------



CRESCENT CREEK BARDOLIER 156A

Lot 44

MALE WOS 156A MARCH 09 2013 1760248

Sire: CRESCENT CREEK TOMBOY 15W

C H QUANTUM 3330
GDAR QUANTUM 963
G D A R MISS KEM 080

Dam: CRESCENT CREEK LADY BATE 076N

DWAJO CHIEF 92E
CRESCENT CREEK LADY BATE 61H
CRESCENT CREEK LADY BATE 93B

B Wt	84 lbs
205 Wt	695 lbs
365 Wt	1193 lbs
C Ease	* *
BEPD	+1.1
WEPD	+34
YEPD	+64
Milk	+20
TM	+37

EPD'S:	REA: +0.10	Marb: +0.21	Fat: -0.003	Carcass Wt: +6
--------	------------	-------------	-------------	----------------

ACTUAL:	REA: 11.7	Marb: 2.28	Fat: 0.18	LMY: 63%
---------	-----------	------------	-----------	----------



VINCENT SOMOGYI

Box 121, Willowbrook, SK S0A 4P0
306.621.1453 | 306.782.7499

**WHEN YOU NEED
CANOLA SEED,
TALK TO
Fairland Seeds Ltd.**



Tim & Shelly Beres, owners of Fairland Seeds Ltd. have been growing and selling canola seed for the past 30 years. They know which varieties perform best in your area and only recommend the ones that suit your farm. Along with canola seed Fairland Seeds Ltd. offer a complete line up of Pioneer corn and soybean seed plus Alpine Plant Food and Hi Tee Grain Bags.

Book early to get the right variety for your farm.

Our experts are grown locally
Contact Tim at Fairland Seeds
Phone 306-728-5112 or Cell 306-730-9933

PRETTY VIEW
Stock Farm Ltd.

Ivan and Phyllis Olynyk
306.563.5099
ivanolynyk@hotmail.com
www.prettyview.net.ca
Canora, Saskatchewan

RODENATOR
Pest Control

Northstar
Seeds
CORN & FORAGE
seed dealers

PVSR

Beef business consultation - for a "you can do it hands on way," including grazing, electric fence design and breeding stock selection for lower cost production.

REFERENCE SIRE



KG SMART ONE 9116

MALE IMP 9116W FEBRUARY 4 2009 1600344

SITZ ALLIANCE 6595 AMF NHF
CONNEALY ONWARD AMF CAF NHF
ALTUNE OF CONANGA 6104

Sire: SITZ WISDOM 418T AMF CAF MAF

SITZ NEW DESIGN 349M AMF CAF NHF
SITZ ELLUNA ELITE 94P
SITZ ELLUNA ELITE 163M

CONNEALY OUT FRONT
KG OUT FRONT 2217
KG VICTORIA 8303

Dam: KG RITO LADY 7988

LCC PREMONITION H164L
KG RITO LADY 4027
KG RITO LADY 2346

B Wt	92 lbs
205 Wt	816 lbs
365 Wt	1272 lbs
C Ease	
BEPD	+2.9
WEPD	+73
YEPD	+124
Milk	+22
TM	+59
Scrotal	---



KG SMART ONE 9116 . 5 Sons Sell

EPD'S:	REA: +0.31	Marb: +0.44	Fat: +0.026	Carcass Wt: +37
--------	------------	-------------	-------------	-----------------

We were fortunate to have been able to purchase one of a limited semen packages being offered on this young bull. The results were excellent.

The cattle are moderate for birth but really perform later. We have since purchased a SITZ WISDOM 418T bull to introduce these genetics to our herd. After receiving his first set of calves we are very pleased.

CRESCENT CREEK SMART ONE 73A

Lot 45 MALE WOS 73A FEBRUARY 06 2013 1738074

Sire: KG SMART ONE 9116

FIGURE 8 ANGUS TOM BOY 509R
LOOKOUT HUCK 53T
LOOKOUT EDNA 145L

Dam: CRESCENT CREEK LASSIE 42Y

B S S LIMITED DESIGN
CRESCENT CREEK LASSIE 48N
CRESCENT CREEK LASSIE 33H

Here is another top herd bull prospect. Out of a 1st calf heifer that did an exceptional job raising him.

Some of the best cow families here in this pedigree.

BW	88 lbs
WW	519 lbs
YW	1360 lbs
CE	* *
BEPD	+3.5
WEPD	+41
YEPD	+100
Milk	+13
TM	+34

EPD'S:	REA: +0.25	Marb: +0.42	Fat: +0.007	Carcass Wt: +20
--------	------------	-------------	-------------	-----------------

ACTUAL:	REA: 14.7	Marb: 3.22	Fat: 0.21	LMY: 65.6%
---------	-----------	------------	-----------	------------

SALE FEATURE



Lot 45

KG SMART ONE 9116

CRESCENT CREEK SMART ONE 40A

Lot 46 MALE DOS 40A JANUARY 30 2013 1738031

Sire: KG SMART ONE 9116

O C C EMBLAZON 854E
B C C-J C L EMBLAZON 038-287
B C C 1531 ELDORENE 826-038

Dam: CRESCENT CREEK EMBLAZON 49T
AJC H A F TRAVELER 01L
YOUNG DALE MCHENRY LASS 101R
MINBURN MCHENRY LASS 22K

BW	98 lbs
WW	772 lbs
YW	1293 lbs
CE	*
BEPD	+3.8
WEPD	+59
YEPD	+103
Milk	+20
TM	+50

EPD'S:	REA: +0.32	Marb: +0.38	Fat: +0.022	Carcass Wt: +24
--------	------------	-------------	-------------	-----------------

ACTUAL:	REA: 12.4	Marb: 4.09	Fat: 0.22	LMY: 64.1%
---------	-----------	------------	-----------	------------

A definite sale feature here.

His dam is consistently producing good ones every year. She produced a high seller to Allandale Angus and Everblack that has done a nice job for them. She is a model cow with a perfect udder.

40A's sire has done an excellent job here as you will see by his consistent offering.

Selling Full Possession and Crescent Creek Retains 1/3 Semen Interest.



CRESCENT CREEK CHISUM D0S 64Y
MATERNAL BROTHER TO LOT 46

SALE FEATURE



Lot 46

KG SMART ONE 9116

CRESCENT CREEK ANGUS

CRESCENT CREEK SMART ONE 46A

Lot 47 MALE WOS 46A JANUARY 31 2013 1738054

Sire: KG SMART ONE 9116

O C C EMBLAZON 854E
B C C-J C L EMBLAZON 038-287
B C C 1531 ELDORENE 826-038

Dam: CRESCENT CREEK QUEEN RUTH 67Y

MINBURN MAIN EVENT 82R
CRESCENT CREEK QUEEN RUTH 56T
CRESCENT CREEK QUEEN RUTH 66M

EPD'S:	REA: +0.35	Marb: +0.30	Fat: +0.013	Carcass Wt: +23
--------	------------	-------------	-------------	-----------------

ACTUAL:	REA: 13.1	Marb: 2.84	Fat: 0.37	LMY: 60.3%
---------	-----------	------------	-----------	------------

BW	82 lbs
WW	734 lbs
YW	1267 lbs
CE	* * *
BEPD	+3.9
WEPD	+63
YEPD	+106
Milk	+17
TM	+49



Another heifers 1st calf that will impress. Excellent hair coats and great foot structure are all very common in this sire group. Suitable for heifers with plenty of performance later.

CRESCENT CREEK SMART ONE 55A

Lot 48 MALE WOS 55A FEBRUARY 01 2013 1738056

Sire: KG SMART ONE 9116

E X A R SCOTCH CAP 816
RR SCOTCHMAN 2999
ERICA LASSIE OF R R 8464

Dam: CRESCENT CREEK ROSEBUD 133R

GDAR QUANTUM 963
CRESCENT CREEK HEROINE 076N
CRESCENT CREEK LADY BATE 61H

EPD'S:	REA: +0.09	Marb: +0.31	Fat: +0.024	Carcass Wt: +27
--------	------------	-------------	-------------	-----------------

ACTUAL:	REA: 11.0	Marb: 2.12	Fat: 0.20	LMY: 63%
---------	-----------	------------	-----------	----------

BW	98 lbs
WW	682 lbs
YW	1215 lbs
CE	*
BEPD	+3.8
WEPD	+54
YEPD	+98
Milk	+23
TM	+50



CRESCENT CREEK SMART ONE 95A

Lot 49 MALE DTZ 95A FEBRUARY 10 2013 1736154

Sire: KG SMART ONE 9116

FIGURE 8 ANGUS TOM BOY 509R
LOOKOUT HUCK 53T
LOOKOUT EDNA 145L

Dam: CRESCENT CREEK PRIDE 38Y

CHICO KODIAK 93K
CRESCENT CREEK PRIDE 27M
CRESCENT CREEK PRIDE 10E

EPD'S:	REA: +0.16	Marb: +0.29	Fat: +0.021	Carcass Wt: +21
--------	------------	-------------	-------------	-----------------

ACTUAL:	REA: 10.7	Marb: 2.81	Fat: 0.14	LMY: 64%
---------	-----------	------------	-----------	----------

BW	98 lbs
WW	698 lbs
YW	1184 lbs
CE	*
BEPD	+4.1
WEPD	+53
YEPD	+89
Milk	+17
TM	+44



A big-topped deep-bodied Smart One son who will sire the type of cattle for todays needs. It is pretty hard to pick apart this sire group.

REFERENCE SIRE



SFL UP TOP 42Y

MALE SFL 42Y JANUARY 30 2011 1603029

CONNEALY LEAD ON
CONNEALY ONWARD
ALTUNE OF CONANGA 6104
Sire: SITZ UPWARD 307R
SITZ VALUE 7097 AMF CAF NHF DDF
SITZ HENRIETTA PRIDE 81M
SITZ HENRIETTA PRIDE 1370

N BAR EMULATION EXT
LEACHMAN RIGHT TIME DMF AMF
LEACHMAN ERICA 0025
Dam: MISS WIX 301 OF MC CUMBER
MC CUMBER FERDINAND 896
MISS WIX 1119 OF MC CUMBER
MISS WIX 8002 OF MC CUMBER

B Wt	85 lbs
205 Wt	628 lbs
365 Wt	1240 lbs
C Ease	
BE PD	-0.3
WE PD	+60
YE PD	+110
Milk	+30
TM	+60
Scrotal	---



GRANDSIRE SITZ UPWARD 307R
. 4 Sons Sell

EPD'S:	REA: +0.40	Marb: +0.18	Fat: +0.003	Carcass Wt: +53
--------	------------	-------------	-------------	-----------------

We purchased this Upward son to add some popular blood lines to our program and because of his exceptional mother. Smart Farms highly recommended this bull for heifers and 42Y calved like a breeze. We too highly recommend his sons for heifers.

CRESCENT CREEK UPWARD 16A

Lot 50 MALE WOS 16A JANUARY 23 2013 1750097

Sire: SFL UP TOP 42Y

FIGURE 8 ANGUS TOM BOY 509R
LOOKOUT HUCK 53T
LOOKOUT EDNA 145L

Dam: CRESCENT CREEK MARGARET 11Y

RRD FAME 1K
CRESCENT CREEK MARGARET 21M
CRESCENT CREEK MARGARET 37J

A definite pick for a hfr program. Upward combined with Huck 53T is a sure bet for calving ease.

BW	78 lbs
WW	723 lbs
YW	1126 lbs
CE	* * *
BE PD	+1.4
WE PD	+54
YE PD	+81
Milk	+22
TM	+49

EPD'S:	REA: +0.35	Marb: +0.24	Fat: +0.007	Carcass Wt: +28
--------	------------	-------------	-------------	-----------------

ACTUAL:	REA: 11.0	Marb: 2.26	Fat: 0.16	LMY: 64.3%
---------	-----------	------------	-----------	------------

SALE FEATURE



Lot 50

SFL UP TOP 42Y

CRESCENT CREEK ANGUS

CRESCENT CREEK UPWARD 150A**Lot 51**

MALE WOS 150A MARCH 02 2013 1750088

Sire: SFL UP TOP 42YFIGURE 8 ANGUS TOM BOY 509R
LOOKOUT HUCK 53T
LOOKOUT EDNA 145L**Dam: CRESCENT CREEK ROSEBUD 200Y**SITZ HERITAGE 10709
CRESCENT CREEK ROSEBUD 7R
CRESCENT CREEK ROSEBUD 115F

ACTUAL:	REA: 13.9	Marb: 1.78	Fat: 0.20	LMY: 64.5%
---------	-----------	------------	-----------	------------

BW	88 lbs
WW	738 lbs
YW	1272 lbs
CE	* * *
BEPD	+1.4
WEPD	+52
YEPD	+84
Milk	+22
TM	+48



A very good 42Y son out of the Huck bull we used on heifers. Calving ease very deep in his pedigree.

CRESCENT CREEK UPWARD 158A**Lot 52**

MALE WOS 158A MARCH 13, 2013 1750087

Sire: SFL UP TOP 42YE X A R SCOTCH CAP 816
RR SCOTCHMAN 2999
ERICA LASSIE OF R R 8464**Dam: CRESCENT CREEK ROSEBUD 14R**FREEWAY 276T OF J R S
CRESCENT CREEK ROSEBUD 43Z
PRAIRIELANE 5012 DUSTY 7034

EPD'S:	REA: +0.11	Marb: +0.15	Fat: +0.019	Carcass Wt: +34
--------	------------	-------------	-------------	-----------------

ACTUAL:	REA: 11.2	Marb: 3.14	Fat: 0.21	LMY: 61.9%
---------	-----------	------------	-----------	------------

BW	82 lbs
WW	707 lbs
YW	1158 lbs
CE	* * *
BEPD	+0.0
WEPD	+50
YEPD	+83
Milk	+23
TM	+48

**CRESCENT CREEK ROSEBUD 14R**
DAM OF LOT 52

His dam was a very close candidate for pick of the herd. Scotch Cap and Rosebud combination always work.

**CRESCENT CREEK UPWARD 177A****Lot 53**

MALE WOS 177A APRIL 04 2013 1760250

Sire: SFL UP TOP 42YMINBURN MAIN EVENT 71N
MINBURN MAIN EVENT 82R
MINBURN JOY 34L**Dam: CRESCENT CREEK ROSEBUD 65T**RR SCOTCHMAN 2999
CRESCENT CREEK PRIDE 164P
CRESCENT CREEK PRIDE 106M

ACTUAL:	REA: 12.8	Marb: 4.23	Fat: 0.16	LMY: 65.3%
---------	-----------	------------	-----------	------------

BW	74 lbs
WW	658 lbs
YW	990 lbs
CE	* * *
BEPD	-0.2
WEPD	+44
YEPD	+61
Milk	+21
TM	+43



CRESCENT CREEK EMBLAZON 152A

Lot 54 MALE WOS 152A MARCH 04 2013 1771322

BCC-JCLEMBLAZON 038-287
BRONYX EMBLAZON 58T
CRESCENT CREEK ROSEBUD 25R

Sire: CRESCENT CREEK EMBLAZON 171Y

GDAR TRAVELER 235
CRESCENT CREEK HEROINE 121P
CRESCENT CREEK HEROINE 159M

EXAR SCOTCH CAP 816 AMF CAF NHF DDF
RR SCOTCHMAN 2999
ERICA LASSIE OF RR 8464

Dam: CRESCENT CREEK BLACKBIRD 90W

GDAR QUANTUM 963
CRESCENT CREEK BLACKBIRD 138N
CRESCENT CREEK BLACKBIRD 126J

B Wt	88 lbs
205 Wt	726 lbs
365 Wt	1212 lbs
C Ease	* *
BEPD	+3.2
WEPD	+48
YEPD	+85
Milk	+14
TM	+38



EPD'S:	REA: +0.01	Marb: +0.09	Fat: +0.027	Carcass Wt: +17
--------	------------	-------------	-------------	-----------------

ACTUAL:	REA: 10.8	Marb: 2.27	Fat: 0.17	LMY: 62.8%
---------	-----------	------------	-----------	------------

CRESCENT CREEK EMBLAZON 147A

Lot 55 MALE KOS 147A MARCH 01 2013 1771324

BCC-JCLEMBLAZON 038-287
BRONYX EMBLAZON 58T
CRESCENT CREEK ROSEBUD 25R

Sire: CRESCENT CREEK EMBLAZON 171Y

GDAR TRAVELER 235
CRESCENT CREEK HEROINE 121P
CRESCENT CREEK HEROINE 159M

CARIDEAL 650
CARIDEAL 061
CAR MISS VIKING 601

Dam: CRESCENT CREEK HEROINE 167T

RON'S STEMWINDER 74J
CRESCENT CREEK HEROINE 13L
CRESCENT CREEK HEROINE 8D

BW	85 lbs
WW	681 lbs
YW	1072 lbs
CE	* *
BEPD	+4.3
WEPD	+40
YEPD	+66
Milk	+13
TM	+33



EPD'S:	REA: +0.06	Marb: -0.02	Fat: +0.010	Carcass Wt: +11
--------	------------	-------------	-------------	-----------------

ACTUAL:	REA: 10.1	Marb: 3.67	Fat: 0.13	LMY: 63.6%
---------	-----------	------------	-----------	------------

CRESCENT CREEK FREEDOM 169A

Lot 56 MALE WOS 169A MARCH 22 2013 1738112

WESTERN FREEDOM 505
TJF FREEDOM 29U
TJF FORTUNE CHIEF 78R

Sire: BARD K FREEDOM 3'10

SA V NET WORTH 4200 AMF CAF NHF DDF
BARD K ERROLLINE 8'07
KRAY ERROLLINE 2'03

BCC-JCLEMBLAZON 038-287
BRONYX EMBLAZON 58T
CRESCENT CREEK ROSEBUD 25R

Dam: CRESCENT CREEK ANDREA 16W

BEVERLY HILLS CENTENNIAL 503
FRL ANDREA 707T
VDAR BIGSKY ANDREA 5039

BW	96 lbs
WW	569 lbs
YW	1103 lbs
CE	*
BEPD	+6.2
WEPD	+35
YEPD	+60
Milk	+19
TM	+37



EPD'S:	REA: +0.07	Marb: +0.09	Fat: +0.004	Carcass Wt: +6
--------	------------	-------------	-------------	----------------

ACTUAL:	REA: 10.1	Marb: 3.67	Fat: 0.13	LMY: 63.6%
---------	-----------	------------	-----------	------------

CRESCENT CREEK FREEDOM 166A

Lot 57 MALE WMO 166A MARCH 20 2013 1738027

WESTERN FREEDOM 505
TJF FREEDOM 29U
TJF FORTUNE CHIEF 78R

Sire: BAR D K FREEDOM 3'10

S A V NET WORTH 4200
BAR D K ERROLLINE 8'07
KRAY ERROLLINE 2'03

WILLABAR AMBUSH 45G
LOOKOUT PACESETTER 258M
GRASSY LANES MILLY 29U

Dam: MINBURN ELLEN ERICA 52X

SOO LINE YELLOWSTONE 237P
MINBURN ELLEN ERICA 191T
MINBURN ELLEN ERICA 131N

BW	94 lbs
WW	724 lbs
YW	1068 lbs
CE	* *
BEPD	+6.1
WEPD	+34
YEPD	+52
Milk	+22
TM	+39



EPD'S:	REA:-0.15	Marb:+0.06	Fat:+0.002	Carcass Wt: -3
--------	-----------	------------	------------	----------------

CRESCENT CREEK SCOTSMAN 48A

Lot 58 MALE WOS 48A JANUARY 31 2013 1745072

R R SCOTCHCAP 9440
E X A R SCOTCH CAP 816
LEACHMAN BLACKCAP 2202

Sire: RR SCOTCHMAN 2999

R R FERDINAND 758D
ERICA LASSIE OF R R 8464
ERICA LASSIE OF R R 4580

SITZ TRAVELER 8180
SITZ ALLIANCE 6595 DMF
SITZ BARBARAMERE JET 2698

Dam: CRESCENT CREEK PRIDE 53N

ALTA ERIC REVOLUTION 464D
WAVENY PRIDE 77G
WAVENY PRIDE 11B

BW	99 lbs
WW	705 lbs
YW	1137 lbs
CE	*
BEPD	+1.8
WEPD	+51
YEPD	+89
Milk	+23
TM	+49

SALE FEATURE

An excellent 2999 son out of a direct Alliance 6595 daughter.

This bull would be excellent for heifers or for keeping every replacement you could. If you were to tour our herd you would see the success we had using 2999 and Alliance. Females with flawless udders and built in longevity.

EPD'S:	REA:-0.18	Marb: +0.22	Fat: +0.050	Carcass Wt: +26
ACTUAL:	REA: 12.8	Marb: 6.44	Fat: 0.27	LMY: 62.7%



CRESCENT CREEK BLACKMAN 91A

Lot 59

MALE WOS 91A FEBRUARY 09 2013 1738079

GEIS BLACKMAN 18600
GEIS BLACKMAN 22405
GEIS PRIDE 13901

Sire: GEIS BLACKMAN 88'08

L T 598 BANDO 9074 AMF CAF NHF DDF
BEAR HILLS ATALANTA 3P
BEAR HILLS ATALANTA 20M

SITZ HERITAGE 10709
CRESCENT CREEK HERITAGE 30R
CRESCENT CREEK HEROINE 8D

Dam: GEIS OAKLEAF 89'08

LLB BRUTE
GEIS OAKLEAF 3705
MJLC OAKLEAF 49N

BW	100 lbs
WW	675 lbs
YW	1102 lbs
CE	*
BEPD	+4.6
WEPD	+41
YEPD	+75
Milk	+17
TM	+38



ACTUAL:	REA: 12	Marb: 2.76	Fat: 0.16	LMY: 64.5%
---------	---------	------------	-----------	------------

CRESCENT CREEK JUMBO 35A

Lot 60

MALE JANUARY 29 2013 PENDING

R R SCOTCHCAP 9440
HAPPYVALE BLACK BARD 34X
LEACHMAN BLACKCAP 2202

Sire: HAPPYVALE BLACK JUMBO 1B

R R FERDINAND 758D
BLACKCAP BOTHA
ERICA LASSIE OF R R 4580

ANGUS RIDGE CANADIAN ESTON 40G
ANGUS RIDGE ESTON ROCKY 26K
ANGUS RIDGE ROSEBUD 1H

Dam: ANGUS RIDGE BLACKBIRD 180P

CANADIAN CONCORD
ANGUS RIDGE BLACKBIRD 23H
BLACKBIRD OF ANGUS RIDGE 19Z

BW	92 lbs
WW	730 lbs
YW	1100 lbs
CE	* *

SALE FEATURE

We always save the last lot for the unique ones.

This year offers a rare find, an actual walking in the flesh "Poundmaker" son. Not semen or embryo's but the results. If straight Canadian pedigrees are your choice, this young bull is unique. Old genetics noted for what made our breed great.

Pound for pound this fellow stacks up. No wonder they called his sire what they did.

ACTUAL:	REA: 12.4	Marb: 2.81	Fat: 0.20	LMY:
---------	-----------	------------	-----------	------



Straight Canadian Pedigree

Lot 60



FEMALES

breeding bulls. Cow families are very important to us, as you can see which ones always produce the best, no matter what the mating is. Feel very confident in your selections as this herd has been developed over many years of stringent culling. We have always kept in mind what has made the angus cow the mother cow of all time.

Once again we offer you our payment plan of 60% down sale day and 40% Oct 1 2013, with both cheques being left sale day. As in the past you can see an advantage of purchasing these young females in the spring as their value rises by fall. We feel this a great opportunity to purchase cow families that are recognized through out the angus breed. Feel free to call at any time as we enjoy talking about these females, after all it is your cow herd that dictates the success of any program.

REFERENCE SIRE



S CHISUM 6175 AMF CAF NHF

MALE IMP 6175S MARCH 31 2006 1539796

SITZ ALLIANCE 6595 AMF NHF
PAWS UP ALLIANCE 9561

SITA EVERELDA ENTENSE 023

Sire: S ALLIANCE 3313 AMF

N BAR EMULATION EXT U2023

PAWS UP 9048 EMULATION EXT

M H R MISS RAINMAKER 1034

S S TRAVELER 6807 T510 AMF CAF NHF

S ECLIPSE 169

H L LADY TRAVELER 416

Dam: S GLORIA 464

LEACHMAN RIGHT TIME AMF

S GLORIA 209

S GLORIA 0118

B Wt	72 lbs
205 Wt	838 lbs
365 Wt	1436 lbs
C Ease	
BEPD	+2.9
WEPD	+69
YEPD	+119
Milk	+38
TM	+73
Scrotal	---



**S CHISUM 6175 -
4 Daughters Sell~**

EPD'S:	REA: +0.69	Marb: -0.02	Fat: -0.08	Carcass Wt: +55
--------	------------	-------------	------------	-----------------

We are very impressed with the job this bull has done. We have offered some of the best we have. Chisum daughters always brought a premium at any sale they were consigned to. They are easy fleshing and broody, but still very feminine. These females are very easy to find in the pen.



CRESCENT CREEK ROSEBUD 5A

Lot 61

FEMALE WOS 5A JANUARY 16 2013 1738034

Sire: S CHISUM 6175 AMF CAF NHF

O C C EMBLAZON 854E

B C C J C L EMBLAZON 038-287

B C C 1531 ELDORENE 826-038

Dam: CRESCENT CREEK ROSEBUD 30T

SITZ HERITAGE 10709

CRESCENT CREEK ROSEBUD 7R

CRESCENT CREEK ROSEBUD 115F

BW	78 lbs
WW	582 lbs
YW	809 lbs
BEPD	+0.7
WEPD	+54
YEPD	+94
Milk	+20
TM	+47

An exceptional Chisum daughter out of a Rosebud who was in strong contention to be one of the pick of the herd selections.

Due to large number of females born last year our offering this year is exceptional nothing held back.

SALE FEATURE

EPD'S:	REA: +0.66	Marb: +0.25	Fat: -0.016	Carcass Wt: +42
--------	------------	-------------	-------------	-----------------



Lot 62 **CRESCENT CREEK ERICA 6A**
FEMALE WOS 6A JANUARY 18 2013 1738035

SALE FEATURE

EPD'S:	REA: +0.40	Marb: +0.17	Fat: +0.029	Carcass Wt: +43
--------	------------	-------------	-------------	-----------------

Sire: S CHISUM 6175 AMF CAF NHF

E X A R SCOTCH CAP 816
RR SCOTCHMAN 2999
ERICA LASSIE OF R R 8464

Dam: CRESCENT CREEK ERICA 133S

TRAVELER 3173 G D A R
HILOW ERICA 32D
HILOW ERICA 2B

BW	94 lbs
WW	646 lbs
YW	921 lbs
BEPD	+2.6
WEPD	+55
YEPD	+99
Milk	+25
TM	+53

The Chisum females are highly accepted at any sale they are offered at. Simple reason they make great cows.

Stop by and see what they become as mother cows.



Lot 63 **CRESCENT CREEK ERROLINE 14A**
FEMALE DTZ 14A JANUARY 22 2013 1736148

Sire: S CHISUM 6175 AMF CAF NHF

E X A R SCOTCH CAP 816
RR SCOTCHMAN 2999
ERICA LASSIE OF R R 8464

Dam: CRESCENT CREEK ERROLINE 52S

CRESCENT CREEK CHIEF 80G
CRESCENT CREEK EROLLINE 56L
KBJ EUGENIE 287G

BW	82 lbs
WW	620 lbs
YW	799 lbs
BEPD	+2.4
WEPD	+56
YEPD	+94
Milk	+24
TM	+52

EPD'S:	REA: +0.37	Marb: +0.08	Fat: +0.022	Carcass Wt: +42
--------	------------	-------------	-------------	-----------------



Outstanding Chisum daughters out of some of our best "2999" cows. I am not sure you would get the chance to purchase these females in another year. Perhaps a weak moment on our part, but we especially take pride in the fact that our females do go out and work for their new owners. In this rising female market it would be interesting to see what these two would be worth at a high end sale as bred females.

Lot 64 **CRESCENT CREEK DUCHESS 20A**
FEMALE WOS 20A JANUARY 24 2013 1738040

Sire: S CHISUM 6175 AMF CAF NHF

E X A R SCOTCH CAP 816
RR SCOTCHMAN 2999
ERICA LASSIE OF R R 8464

Dam: CRESCENT CREEK DUCHESS 180T

C H REVIVAL 104
ASPELUND DUCHESS 81G
DWAJO DUCHESS 8E

BW	90 lbs
WW	718 lbs
YW	921 lbs
BEPD	+3.7
WEPD	+64
YEPD	+101
Milk	+25
TM	+57

EPD'S:	REA: +0.49	Marb: +0.09	Fat: +0.022	Carcass Wt: +44
--------	------------	-------------	-------------	-----------------



REFERENCE SIRE

**S CHISUM 0206**

MALE IMP 0206 MARCH 25 2010 1644448

PAWS UP ALLIANCE 9561
 S ALLIANCE 3313 AMF
 PAWS UP 9048 EMULATION EXT
Sire: S CHISUM 6175 AMF CAF NHF
 S ECLIPSE 169
 S GLORIA 464
 S GLORIA 209

TC STOCKMAN 365
 DUKE OF MOORE 121
 DIVIDEND 33 OF MOORE J321
Dam: S VANNA 358
 STEVENSON FORTUNE 425C
 S VANNA 857
 PREMIER MISS 9354D

B Wt	
205 Wt	
365 Wt	
C Ease	
BEPD	+4.5
WEPD	+41
YEPD	+71
Milk	+27
TM	+48
Scrotal	---

**S CHISUM 0206 . 3 Daughters Sell**

EPD'S:	REA: +0.56	Marb: +0.27	Fat: +0.012	Carcass Wt: +47
--------	------------	-------------	-------------	-----------------

**CRESCENT CREEK ROSEBUD 56A****Lot 65** FEMALE WOS 56A FEBRUARY 02 2013 1738064

Sire: S CHISUM 6175 AMF CAF NHF
 DWAJO CHIEF 92E
 CRESCENT CREEK CHIEF 80G
 CRESCENT CREEK QUEEN RUTH 64D
Dam: CRESCENT CREEK ROSEBUD 85X
 RR SCOTCHMAN 2999
 CRESCENT CREEK ROSEBUD 133R
 CRESCENT CREEK HEROINE 076N

BW	90 lbs
WW	641 lbs
YW	820 lbs
BEPD	+4.9
WEPD	+44
YEPD	+75
Milk	+24
TM	+46

EPD'S:	REA: +0.24	Marb: +0.14	Fat: -0.006	Carcass Wt: +26
--------	------------	-------------	-------------	-----------------

**CRESCENT CREEK DUCHESS 59A****Lot 66** FEMALE WOS 59A FEBRUARY 03 2013 1738068

Sire: S CHISUM 6175 AMF CAF NHF
 FIGURE 8 ANGUS TOM BOY 509R
 LOOKOUT HUCK 53T
 LOOKOUT EDNA 145L
Dam: CRESCENT CREEK DUCHESS 125W
 MINBURN MAIN EVENT 82R
 CRESCENT CREEK DUCHESS 90T
 CRESCENT CREEK DUCHESS 27P

BW	72 lbs
WW	604 lbs
YW	795 lbs
BEPD	+1.4
WEPD	+39
YEPD	+66
Milk	+21
TM	+41

EPD'S:	REA: +0.27	Marb: +0.16	Fat: +0.006	Carcass Wt: +24
--------	------------	-------------	-------------	-----------------

**CRESCENT CREEK PRIDE 112A****Lot 67** FEMALE WOS 112A FEBRUARY 17 2013 1738095

Sire: S CHISUM 6175 AMF CAF NHF
 SITZ TRADITION RLS 8702
 CRESCENT CREEK TRADITION 177S
 CRESCENT CREEK ROSEBUD 115F
Dam: CRESCENT CREEK PRIDE 181U
 EASTONDALE ICEBERG 05'04
 DWAJO PRIDE 230S
 MOBO PRIDE

BW	86 lbs
WW	628 lbs
YW	855 lbs
BEPD	+3.3
WEPD	+41
YEPD	+71
Milk	+20
TM	+41

EPD'S:	REA: +0.28	Marb: +0.14	Fat: +0.007	Carcass Wt: +24
--------	------------	-------------	-------------	-----------------



REFERENCE SIRE



FEMALES

CRESCENT CREEK PACESETTER 16U

MALE KOS 16U JANUARY 18 2008 1435898

PARAMONT AMBUSH 2172 AMF CAF NHF
WILLABAR AMBUSH 45G
WILLABAR COUNTESS 90A

Sire: LOOKOUT PACESETTER 258M

ED RENE EILEENMERE 45P
GRASSY LANES MILLY 29U
GRASSY LANES MILLY 37S

SITZ ALLIANCE 6595 AMF NHF
CRESCENT CREEK ALLIANCE 29N
KBJ MISS COMPRESS 862K

Dam: CRESCENT CREEK STUMPIE 9R

LOOKOUT PACESETTER 147L
FIGURE 8 ANGUS STUMPIE 12N
FIGURE 8 ANGUS STUMPIE 112K

B Wt	70 lbs
205 Wt	614 lbs
365 Wt	1085 lbs
C Ease	
BEPD	-1.3
WEPD	+33
YEPD	+34
Milk	+11
TM	+28
Scrotal	---



CRESCENT CREEK PACESETTER 16U
. 8 Daughters Sell

EPD'S:	REA: -0.13	Marb: -0.19	Fat: +0.010	Carcass Wt: -9
--------	------------	-------------	-------------	----------------

In away we feel very fortunate to be using so many home raised herdbulls. We selected these bulls simply on the strength of their dams, and it has excelled our program even faster. 16U is a perfect example, we used this bull primarily on heifers and were surprised to see how many of them made it into the replacement pen.

If you have the time we would like to show you his daughters and see why this bull will be used here for many years to come. With many milking daughters in the herd it is easy to see why this outcross bull has become a very important breeding tool for us.

"Pacesetter" 16U has surpassed every expectation of him as he was chosen for our heifer pen over 5 years ago. His females make excellent cows as we have retained as many as we can. We offer 8 and retain 10 for ourselves. You judge which end these are. It really doesn't matter they will all make great cows.

CRESCENT CREEK LADY BATE 41A

Lot 68 FEMALE WOS 41A JANUARY 30 2013 1738048

Sire: CRESCENT CREEK PACESETTER 16U

O C C TRAVELER 723Z
GDAR TRAVELER 235
GDAR PRIMROSE 0251

Dam: CRESCENT CREEK LADY BATE 49R

BOTANY ANGUS MAX 5A
CRESCENT CREEK LADY BATE 50F
CRESCENT CREEK LADY BATE 48Y

BW	74 lbs
WW	568 lbs
YW	783 lbs
BEPD	-1.1
WEPD	+34
YEPD	+55
Milk	+14
TM	+31

EPD'S:	REA: -0.10	Marb: -0.08	Fat: +0.016	Carcass Wt: +1
--------	------------	-------------	-------------	----------------



Lot 68

CRESCENT CREEK ERROLINE 60A

Lot 69 FEMALE WOS 60A FEBRUARY 03 2013 1738067

Sire: CRESCENT CREEK PACESETTER 16U

MINBURN MAIN EVENT 71N
MINBURN MAIN EVENT 82R
MINBURN JOY 34L

Dam: CRESCENT CREEK EROLINE 66T

EVERBLACK MASTERPLAN 36G
CRESCENT CREEK EUGENIE 72J
KBJ EUGENIE 287G

BW	90 lbs
WW	570 lbs
YW	773 lbs
BEPD	+3.2
WEPD	+36
YEPD	+52
Milk	+8
TM	+26

EPD'S:	REA: -0.13	Marb: -0.02	Fat: +0.010	Carcass Wt: -5
--------	------------	-------------	-------------	----------------



Lot 69

CRESCENT CREEK MINA 61A

Lot 70 FEMALE DTZ 61A FEBRUARY 03, 2013 1736151

Sire: CRESCENT CREEK PACESETTER 16U

O C C TRAVELER 723Z
GDAR TRAVELER 235
GDAR PRIMROSE 0251

Dam: CRESCENT CREEK MINA 56R

DWAJO CHIEF 92E
CRESCENT CREEK MINA 53H
TERRLENE MINA 60Y

EPD'S:	REA:-0.13	Marb:-0.03	Fat:+0.005	Carcass Wt:-3
--------	-----------	------------	------------	---------------

BW	82 lbs
WW	612 lbs
YW	827 lbs
BEPD	+1.2
WEPD	+36
YEPD	+55
Milk	+14
TM	+32



CRESCENT CREEK DUCHESS 71A

Lot 71 FEMALE DTZ 71A FEBRUARY 05 2013 1764868

Sire: CRESCENT CREEK PACESETTER 16U

DWAJO CHIEF 92E
CRESCENT CREEK THUNDER 51L
CRESCENT CREEK QUEEN RUTH 64D

Dam: CRESCENT CREEK DUCHESS 27P

BOTANY ANGUS MAX 5A
CRESCENT CREEK DUCHESS 6E
DUCHESS JLB 53'83

EPD'S:	REA:-0.37	Marb:-0.05	Fat:-0.001	Carcass Wt:-2
--------	-----------	------------	------------	---------------

BW	72 lbs
WW	539 lbs
YW	775 lbs
BEPD	+1.4
WEPD	+33
YEPD	+52
Milk	+13
TM	+30



CRESCENT CREEK ERICA 98A

Lot 72 FEMALE WOS 98A FEBRUARY 11 2013 1738084

Sire: CRESCENT CREEK PACESETTER 16U

C A R IDEAL 650
CAR IDEAL 061
C A R MISS VIKING 601

Dam: CRESCENT CREEK ERICA 46T

TRAVELER 3173 G D A R
HILOW ERICA 32D
HILOW ERICA 2B

EPD'S:	REA:-0.08	Marb:-0.05	Fat:+0.014	Carcass Wt:+3
--------	-----------	------------	------------	---------------

BW	88 lbs
WW	605 lbs
YW	808 lbs
BEPD	+1.9
WEPD	+33
YEPD	+53
Milk	+18
TM	+35



CRESCENT CREEK ROSEBUD 103A

Lot 73 FEMALE WOS 103A FEBRUARY 13 2013 1738087

Sire: CRESCENT CREEK PACESETTER 16U

CRESCENT CREEK MAXIMUM 37C
KBJ CONQUOR ALL 447J
LLB KINCHTRY BEAUTY 403E

Dam: CRESCENT CREEK ROSEBUD 4P

RITO 616 OF 4B20 6807 AMF CAF NHF DDF
CRESCENT CREEK ROSEBUD 24L
CRESCENT CREEK ROSEBUD 134G

EPD'S:	REA:-0.08	Marb:+0.04	Fat:+0.010	Carcass Wt:+1
--------	-----------	------------	------------	---------------

BW	82 lbs
WW	618 lbs
YW	lbs
BEPD	+1.2
WEPD	+38
YEPD	+57
Milk	+11
TM	+30



CRESCENT CREEK QUEEN RUTH 126A

Lot 74 FEMALE WOS 126A FEBRUARY 21 2013 1738098

Sire: CRESCENT CREEK PACESETTER 16U

TLA PRIDE'S REVIVAL 85G
CRESCENT CREEK REVIVAL 06J
CRESCENT CREEK QUEEN RUTH 14Z

Dam: CRESCENT CREEK QUEEN RUTH 66M

HOFF GREAT WESTERN S C 456
TRAILVIEW EMPIRE PRIDE 127'96
TRAILVIEW EMPIRE PRIDE 27'92

EPD'S:	REA:-0.10	Marb:-0.04	Fat:-0.001	Carcass Wt:+3
--------	-----------	------------	------------	---------------

BW	84 lbs
WW	606 lbs
YW	761 lbs
BEPD	+2.6
WEPD	+39
YEPD	+54
Milk	+7
TM	+27



CRESCENT CREEK PRIDE 140A

Lot 75 FEMALE WOS 140A FEBRUARY 26 2013 1738104

Sire: CRESCENT CREEK PACESETTER 16U

SITZ ALLIANCE 6595
CRESCENT CREEK ALLIANCE 29N
KBJ MISS COMPRESS 862K

Dam: CRESCENT CREEK PRIDE 181R

CHICO KODIAK 93K
CRESCENT CREEK PRIDE 27M
CRESCENT CREEK PRIDE 10E

EPD'S:	REA: -0.08	Marb: +0.02	Fat: +0.026	Carcass Wt: +6
--------	------------	-------------	-------------	----------------

BW	88 lbs
WW	612 lbs
YW	863 lbs
BEPD	+1.5
WEPD	+40
YEPD	+62
Milk	+14
TM	+34



2013 Buyers

LeSaun Land & Cattle
Royce Reiss
Owen Mawbay
7Z Ranch
Patrick Kopec
Keith Johnson
Bob Hidiuk
Lindsay Horvath
Thomas Simpson
Gregory Bodnar
Ted & Karla Elmy
Anderson Cattle Co.
P.F.R.A
Perry & Johanna Powell
Circle Bar Ranch
Zuchkan Bros
Troy Wlock
Tim Munteau

Doug & Marlene Lyon
Mathew Hillar
Tri-Step-Ranch
Trevor & Donna Plett
Brandy Lane Cattle Co.
Blair & Dennis Cherneski
Brett Weiss
Len Malinowski
Fred Lansdell
Terry & Laura Berezny
Doug & Holly Jenson
K 5 River Ranch
Ross & Darlene Brindley
Marsh Ranches
Glen Gabel
Kort Simpson
Kody Traxel
Dryland Angus

Burkell Livestock
Spring Creek Simmentals
Tom Walsh
Kiah Simpson
Brad Shultz
Andrew Richardson
Brenda Walsh
Hintz Cattle Co.
Tracy Wessing
Tom Neustedder

75% Repeat Customers

FEMALES

CRESCENT CREEK ANGUS

REFERENCE SIRE



MC CUMBER 8R101 RITO 1136

MALE IMP 1136Y FEBRUARY 08 2011 1711872

RITO N BAR
 R R RITO 707 AMF CAF NHF DDF
 ERISKAY OF ROLLIN ROCK 3
Sire: SINCLAIR ENTREPRENEUR 8R101
 N BAR EMULATION EXT
 N BAR KINCHTRY BEAUTY Z1925
 N BAR KINCHTRY BEAUTY 4310

 N BAR EMULATION EXT
 SITZ JLS EMULATION EXT 536P
 IDEAL 4465 OF 6807 4286 AMF NHF
Dam: MISS WIX 7176 OF MC CUMBER
 BT RIGHT TIME 24J AMF CAF NHF DDF
 MISS WIX 364 OF MC CUMBER
 MISS WIX 9131 OF MC CUMBER

B Wt	lbs
205 Wt	lbs
365 Wt	lbs
C Ease	
BEPD	+3.3
WEPD	+37
YEPD	+69
Milk	+19
TM	+38
Scrotal	---



MC CUMBER 8R101 RITO 1136

3 Daughters Sell

EPD'S:	REA: +0.26	Marb: -0.06	Fat: +0.015	Carcass Wt: +29
--------	------------	-------------	-------------	-----------------

CRESCENT CREEK PRIDE 65A

Lot 76 FEMALE DOS 65A FEBRUARY 03 2013 1759315

Sire: MC CUMBER 8R101 RITO 1136

B C C-J C L EMBLAZON 038-287
 BRONYX EMBLAZON 58T
 CRESCENT CREEK ROSEBUD 25R

Dam: CRESCENT CREEK PRIDE 77X
 GDAR QUANTUM 963
 CRESCENT CREEK PRIDE 14P
 DWAJO PRIDE 52L

BW	86 lbs
WW	617 lbs
YW	820 lbs
BEPD	+3.9
WEPD	+40
YEPD	+71
Milk	+18
TM	+38

EPD'S:	REA: +0.26	Marb: +0.00	Fat: +0.009	Carcass Wt: +21
--------	------------	-------------	-------------	-----------------



Lot 76

The first daughters of our 1136 bull to sell. We trust they will become good purchases, as their Grand dam seemed to be the kind we would like.

CRESCENT CREEK LASSIE 110A

Lot 77 FEMALE WOS 110A FEBRUARY 16 2013 1759304

Sire: MC CUMBER 8R101 RITO 1136

B C C-J C L EMBLAZON 038-287
 BRONYX EMBLAZON 58T
 CRESCENT CREEK ROSEBUD 25R

Dam: CRESCENT CREEK LASSIE 38X
 B S S LIMITED DESIGN
 CRESCENT CREEK LASSIE 48N
 CRESCENT CREEK LASSIE 33H

BW	90 lbs
WW	582 lbs
YW	821 lbs
BEPD	+5.6
WEPD	+39
YEPD	+72
Milk	+16
TM	+36

EPD'S:	REA: +0.32	Marb: +0.06	Fat: +0.008	Carcass Wt: +24
--------	------------	-------------	-------------	-----------------



Lot 77

CRESCENT CREEK ROSEBUD 118A

Lot 78 FEMALE WOS 118A FEBRUARY 19 2013 1759303

Sire: MC CUMBER 8R101 RITO 1136

LOOKOUT PACESETTER 258M
 CRESCENT CREEK PACESETTER 16U
 CRESCENT CREEK STUMPIE 9R

Dam: CRESCENT CREEK ROSEBUD 124X
 RR SCOTCHMAN 2999
 CRESCENT CREEK ROSEBUD 86U
 CRESCENT CREEK ROSEBUD 99N

BW	92 lbs
WW	626 lbs
YW	793 lbs
BEPD	+3.9
WEPD	+40
YEPD	+64
Milk	+19
TM	+39

EPD'S:	REA: +0.04	Marb: -0.07	Fat: +0.018	Carcass Wt: +18
--------	------------	-------------	-------------	-----------------



Lot 78

REFERENCE SIRE



FEMALES

KG SMART ONE 9116

MALE IMP 9116W FEBRUARY 4 2009 1600344

SITZ ALLIANCE 6595 AMF NHF
CONNEALY ONWARD AMF CAF NHF
ALTUNE OF CONANGA 6104

Sire: SITZ WISDOM 418T AMF CAF MAF

SITZ NEW DESIGN 349M AMF CAF NHF
SITZ ELLUNA ELITE 94P
SITZ ELLUNA ELITE 163M

CONNEALY OUT FRONT
KG OUT FRONT 2217
KG VICTORIA 8303

Dam: KG RITO LADY 7988

LCC PREMONITION H164L
KG RITO LADY 4027
KG RITO LADY 2346

B Wt	92 lbs
205 Wt	816lbs
365 Wt	1272 lbs
C Ease	
BEPD	+2.9
WEPD	+73
YEPD	+124
Milk	+22
TM	+59
Scrotal	---



KG SMART ONE 9116 7 Daughters Sell

A perfect chance to buy half sibs in a large sire group. The Smartone females have extra thickness in an alternative pedigree. 9116 once again sired an excellent set of calves this winter

EPD'S:	REA: +0.31	Marb: +0.44	Fat: +0.026	Carcass Wt: +37
--------	------------	-------------	-------------	-----------------

CRESCENT CREEK MARGARET 21A

Lot 79 FEMALE DTZ 21A JANUARY 24 2013 1736149

Sire: KG SMART ONE 9116

S A F FAME AMF CAF NHF DDF
RRD FAME 1K
RRD TIBBIE 4E

Dam: CRESCENT CREEK MARGARET 21M

DWAJO CHIEF 92E
CRESCENT CREEK MARGARET 37J
OPALVILLE MARGARET 12'89

BW	82 lbs
WW	658 lbs
YW	896 lbs
BEPD	+3.5
WEPD	+55
YEPD	+91
Milk	+18
TM	+46

EPD'S:	REA: +0.22	Marb: +0.42	Fat: +0.013	Carcass Wt: +20
--------	------------	-------------	-------------	-----------------

One of the feature females of the sale. Her dam 21M has raised a good one every year. 21A leads of an exceptional set of "Smart One" females. A large group of 1/2 and 3/4 sisters would make an excellent start or addition to any herd.



Lot 79

CRESCENT CREEK ROSEBUD 53A

Lot 80 FEMALE WOS 53A FEBRUARY 01 2013 1738059

Sire: KG SMART ONE 9116

WANDERING CRK DYNASTY JRM 2F
SILVER DOME DYNASTY 19T
SILVER DOME OAKLEAF 119L

Dam: CRESCENT CREEK ROSEBUD 66Y

B C C-J C L EMBLAZON 038-287
CRESCENT CREEK ROSEBUD 30T
CRESCENT CREEK ROSEBUD 7R

BW	74 lbs
WW	641 lbs
YW	880 lbs
BEPD	+2.5
WEPD	+55
YEPD	+94
Milk	+18
TM	+46

EPD'S:	REA: +0.23	Marb: +0.48	Fat: +0.040	Carcass Wt: +21
--------	------------	-------------	-------------	-----------------



Lot 80

CRESCENT CREEK ANGUS

CRESCENT CREEK EULA 63A**Lot 81** FEMALE WOS 63A FEBRUARY 03 2013 1738070**Sire: KG SMART ONE 9116**WANDERING CRK DYNASTY JRM 2F
SILVER DOME DYNASTY 19T
SILVER DOME OAKLEAF 119L**Dam: CRESCENT CREEK EULA 63Y**CAR IDEAL 061
CRESCENT CREEK EULA 139T
CRESCENT CREEK EULA 63H

EPD'S:	REA:+0.19	Marb:+0.39	Fat:+0.037	Carcass Wt:+17
--------	-----------	------------	------------	----------------

BW	76 lbs
WW	597 lbs
YW	878 lbs
BEPD	+1.8
WEPD	+47
YEPD	+88
Milk	+19
TM	+43

**CRESCENT CREEK LADY BATE 64A****Lot 82** FEMALE WOS 64A FEBRUARY 03 2013 1738069**Sire: KG SMART ONE 9116**FIGURE 8 ANGUS TOM BOY 509R
LOOKOUT HUCK 53T
LOOKOUT EDNA 145L**Dam: CRESCENT CREEK LADY BATE 23Y**MINBURN ROGUE 37H
DRYLAND LADY BATE 147
CRESCENT CREEK LADY BATE 44E

EPD'S:	REA:+0.21	Marb: +0.28	Fat: +0.019	Carcass Wt: +21
--------	-----------	-------------	-------------	-----------------

BW	80 lbs
WW	655 lbs
YW	917 lbs
BEPD	+3.0
WEPD	+56
YEPD	+97
Milk	+20
TM	+48

**CRESCENT CREEK LASSIE 76A****Lot 83** FEMALE WOS 76A FEBRUARY 06 2013 1738075**Sire: KG SMART ONE 9116**WANDERING CRK DYNASTY JRM 2F
SILVER DOME DYNASTY 19T
SILVER DOME OAKLEAF 119L**Dam: CRESCENT CREEK LASSIE 65Y**CAR IDEAL 061
CRESCENT CREEK LASSIE 132T
CRESCENT CREEK LASSIE 33H

EPD'S:	REA: +0.11	Marb: +0.36	Fat: +0.035	Carcass Wt: +18
--------	------------	-------------	-------------	-----------------

BW	78 lbs
WW	lbs
YW	lbs
BEPD	+3.5
WEPD	+48
YEPD	+85
Milk	+21
TM	+45

**CRESCENT CREEK PRIDE 80A****Lot 84** FEMALE WOS 80A FEBRUARY 07 2013 1738077**Sire: KG SMART ONE 9116**B C C-J C L EMBLAZON 038-287
BRONYX EMBLAZON 58T
CRESCENT CREEK ROSEBUD 25R**Dam: CRESCENT CREEK PRIDE 97Y**CRESCENT CREEK ALLIANCE 29N
CRESCENT CREEK PRIDE 181R
CRESCENT CREEK PRIDE 27M

EPD'S:	REA: +0.26	Marb: +0.33	Fat: +0.030	Carcass Wt: +29
--------	------------	-------------	-------------	-----------------

BW	84 lbs
WW	602 lbs
YW	853 lbs
BEPD	+4.4
WEPD	+57
YEPD	+97
Milk	+18
TM	+47



CRESCENT CREEK PRIDE 100A**Lot 85** FEMALE WOS 100A FEBRUARY 12 2013 1738085**Sire: KG SMART ONE 9116**RR SCOTCHMAN 2999
CRESCENT CREEK SCOTCHMAN 46W
CRESCENT CREEK LUCY 17P**Dam: CRESCENT CREEK BLACK NANCE 34Y**B C C-J C L EMBLAZON 038-287
CRESCENT CREEK NANCE 44T
KBJ BLACK NANCE 608R

EPD'S:	REA: +0.14	Marb: +0.44	Fat: +0.021	Carcass Wt: +23
--------	------------	-------------	-------------	-----------------

BW	94 lbs
WW	604 lbs
YW	843 lbs
BEPD	+5.3
WEPD	+54
YEPD	+94
Milk	+18
TM	+45

**Lot 85****CRESCENT CREEK ROSEBUD 101A****Lot 86** FEMALE WOS 101A FEBRUARY 12 2013 1738086**Sire: KG SMART ONE 9116 CAF**B C C-J C L EMBLAZON 038-287
BRONYX EMBLAZON 58T
CRESCENT CREEK ROSEBUD 25R**Dam: CRESCENT CREEK ROSEBUD 114Y**GDAR FRONTLINE 261
CRESCENT CREEK ROSEBUD 144R
CRESCENT CREEK ROSEBUD 42M

EPD'S:	REA: +0.36	Marb: +0.20	Fat: +0.012	Carcass Wt: +29
--------	------------	-------------	-------------	-----------------

BW	80 lbs
WW	684 lbs
YW	863 lbs
BEPD	+4.4
WEPD	+65
YEPD	+103
Milk	+20
TM	+53

**Lot 86****REFERENCE SIRE****SFL UP TOP 42Y**

MALE SFL 42Y JANUARY 30 2011 1603029

CONNEALY LEAD ON
CONNEALY ONWARD
ALTUNE OF CONANGA 6104**Sire: SITZ UPWARD 307R**SITZ VALUE 7097 AMF CAF NHF DDF
SITZ HENRIETTA PRIDE 81M
SITZ HENRIETTA PRIDE 1370N BAR EMULATION EXT
LEACHMAN RIGHT TIME DMF AMF
LEACHMAN ERICA 0025**Dam: MISS WIX 301 OF MC CUMBER**MC CUMBER FERDINAND 896
MISS WIX 1119 OF MC CUMBER
MISS WIX 8002 OF MC CUMBER

EPD'S:	REA: +0.40	Marb: +0.18	Fat: +0.003	Carcass Wt: +53
--------	------------	-------------	-------------	-----------------

B Wt	85 lbs
205 Wt	628 lbs
365 Wt	1240 lbs
C Ease	
BEPD	-0.3
WEPD	+60
YEPD	+110
Milk	+30
TM	+60
Scrotal	---

**GRANDSIRE SITZ UPWARD 307R**
. 9 Daughters Sell

CRESCENT CREEK BARANDA 50A**Lot 87** FEMALE WOS 50A FEBRUARY 01 2013 1750094**Sire: SFL UP TOP 42Y**

LOOKOUT PACESETTER 258M
 CRESCENT CREEK PACESETTER 16U
 CRESCENT CREEK STUMPIE 9R

Dam: CRESCENT CREEK BARANDA 104Y

RR SCOTCHMAN 2999
 CRESCENT CREEK BARANDA 212T
 CRESCENT CREEK BARANDA 2J

EPD'S:	REA: +0.10	Marb: +0.08	Fat: +0.017	Carcass Wt: +32
--------	------------	-------------	-------------	-----------------

BW	70 lbs
WW	614 lbs
YW	841 lbs
BEPD	-0.6
WEPD	+49
YEPD	+78
Milk	+23
TM	+48



The nice part of having so many females to offer, it gives an excellent chance to put together a real nice package of young females. Rather than pick and choose genetics from array of different sales. We offer the opportunity to pick from large sire groups. Backed by popular cow families.

CRESCENT CREEK ROSEBUD 89A**Lot 88** FEMALE WOS 89A FEBRUARY 09 2013 1750093**Sire: SFL UP TOP 42Y**

LOOKOUT PACESETTER 258M
 CRESCENT CREEK PACESETTER 16U
 CRESCENT CREEK STUMPIE 9R

Dam: CRESCENT CREEK ROSEBUD 19X

RR SCOTCHMAN 2999
 CRESCENT CREEK ROSEBUD 199S
 CRESCENT CREEK ROSEBUD 35J

BW	80 lbs
WW	576 lbs
YW	814 lbs
BEPD	+0.3
WEPD	+50
YEPD	+77
Milk	+22
TM	+47

**CRESCENT CREEK ROSEBUD 159A****Lot 89** FEMALE WOS 159A MARCH 13 2013 1750086**Sire: SFL UP TOP 42Y**

B C C-J C L EMBLAZON 038-287
 BRONYX EMBLAZON 58T
 CRESCENT CREEK ROSEBUD 25R

Dam: CRESCENT CREEK ROSEBUD 12X

SITZ HERITAGE 10709
 CRESCENT CREEK ROSEBUD 7R
 CRESCENT CREEK ROSEBUD 115F

BW	76 lbs
WW	599 lbs
YW	778 lbs
BEPD	+0.5
WEPD	+50
YEPD	+79
Milk	+21
TM	+46

**CRESCENT CREEK ERICA 170A****Lot 90** FEMALE DOS 170A MARCH 22 2013 1750083**Sire: SFL UP TOP 42Y**

SITZ TRAVELER 043
 AJC H A F TRAVELER 01L
 AJC HAF KIRSTEN 45J

Dam: YOUNG DALE ERICA 61P

TRAVELER OF WLA 1Z
 DOUBLE J ERICA 183G
 DOUBLE J ERICA 335Z

BW	82 lbs
WW	647 lbs
YW	838 lbs
BEPD	+1.0
WEPD	+45
YEPD	+73
Milk	+23
TM	+46



EPD'S:	REA: +0.22	Marb: +0.10	Fat: +0.016	Carcass Wt: +29
--------	------------	-------------	-------------	-----------------

CRESCENT CREEK PRIDE 127A**Lot 91** FEMALE DTZ 127A FEBRUARY 21 2013 1750092**Sire: SFL UP TOP 42Y**

LOOKOUT PACESETTER 258M
 CRESCENT CREEK PACESETTER 16U
 CRESCENT CREEK STUMPIE 9R

Dam: CRESCENT CREEK PRIDE 124Y

RR SCOTCHMAN 2999
 CRESCENT CREEK PRIDE 28T
 CRESCENT CREEK PRIDE 27M

EPD'S:	REA: +0.11	Marb: +0.08	Fat: +0.014	Carcass Wt: +30
--------	------------	-------------	-------------	-----------------

BW	74 lbs
WW	631 lbs
YW	798 lbs
BEPD	+0.6
WEPD	+48
YEPD	+72
Milk	+23
TM	+47

**CRESCENT CREEK ROSEBUD 135A****Lot 92** FEMALE WOS 135A FEBRUARY 24 2013 1750091**Sire: SFL UP TOP 42Y**

WANDERING CRK DYNASTY JRM 2F
 SILVER DOME DYNASTY 19T
 SILVER DOME OAKLEAF 119L

Dam: CRESCENT CREEK ROSEBUD 58Y

GDAR TRAVELER 235
 CRESCENT CREEK ROSEBUD 123T
 DOUBLE D ROSEBUD 42P

EPD'S:	REA: +0.10	Marb: +0.27	Fat: +0.024	Carcass Wt: +27
--------	------------	-------------	-------------	-----------------

BW	84 lbs
WW	619 lbs
YW	810 lbs
BEPD	+3.0
WEPD	+43
YEPD	+70
Milk	+23
TM	+45

**CRESCENT CREEK LAURA 139A****Lot 93** FEMALE WOS 139A FEBRUARY 26 2013 1750090**Sire: SFL UP TOP 42Y**

S ALLIANCE 3313 AMF
 S CHISUM 6175 AMF CAF NHF
 S GLORIA 464

Dam: CRESCENT CREEK LAURA 77Y

BEVERLY HILLS FANDANGO 404
 CRESCENT CREEK LAURA 78S
 CRESCENT CREEK LAURA 143M

EPD'S:	REA: +0.39	Marb: +0.17	Fat: +0.005	Carcass Wt: +48
--------	------------	-------------	-------------	-----------------

BW	76 lbs
WW	614 lbs
YW	805 lbs
BEPD	+2.2
WEPD	+56
YEPD	+89
Milk	+26
TM	+54

**CRESCENT CREEK ROSEBUD 157A****Lot 94** FEMALE WOS 157A MARCH 12 2013 1760244**Sire: SFL UP TOP 42Y**

GDAR TRAVELER 235
 CRESCENT CREEK TRAVELER 66P
 CRESCENT CREEK EULA 54M

Dam: CRESCENT CREEK ROSEBUD 184Y

MINBURN MAIN EVENT 82R
 CRESCENT CREEK ROSEBUD 19T
 CRESCENT CREEK ROSEBUD 52P

EPD'S:	REA: +0.12	Marb: +0.11	Fat: -0.003	Carcass Wt: +31
--------	------------	-------------	-------------	-----------------

BW	78 lbs
WW	554 lbs
YW	793 lbs
BEPD	+2.0
WEPD	+44
YEPD	+75
Milk	+20
TM	+42

Darin Bouchard Sales
Specializing in Aluminum
Stock Trailers by Merritt

Cypress River, MB
204-526-7407
MB Dealer #4143
www.merrittgoosenecks.com



CRESCENT CREEK KARAMA 93A**Lot 95** FEMALE WOS 93A FEBRUARY 10 2013 1738082

CRESCENT CREEK 06 RITO 50L
 BAR-E-L RHETT BUTLER 129R
 BAR-E-L 365 HUDE 123J

Sire: GEIS BUTLER 250'08

GEIS MAXIMUM 26'95
 GEIS BAYBERRY 137'01
 GEIS GEORGINA 196'97

R R DAQUANTAE 789E AMF CAF NHF DDF
 KILMAURS DAQUANTAE 1H
 KILMAURS MISS KELLY

Dam: GEIS STAR MAIDEN 24'03

NUGGET 801X OF J R S AMF CAF NHF DDF
 NUGGET STAR MAIDEN
 RUBY STAR BLACK MAIDEN

BW	102 lbs
WW	703 lbs
YW	906 lbs
BEPD	+6.4
WEPD	+48
YEPD	+80
Milk	+16
TM	+40

EPD'S:	REA:-0.09	Marb:+0.09	Fat:-0.009	Carcass Wt:+4
--------	-----------	------------	------------	---------------

**CRESCENT CREEK ROSEBUD 54A****Lot 96** FEMALE WOS 54A FEBRUARY 02 2013 1738065

STEVENSON MONEYMAKER R185
 CUDLOBE MONEYMAKER 79U
 STEVENSON CLOVA PRIDE L901 AMF NHF

Sire: CRESCENT CREEK MONEY MAN 99X

CAR IDEAL 061
 CRESCENT CREEK ROSEBUD 217T
 CRESCENT CREEK ROSEBUD 35J

FIGURE 8 ANGUS TOM BOY 509R
 LOOKOUT HUCK 53T
 LOOKOUT EDNA 145L

Dam: CRESCENT CREEK ROSEBUD 152Y

B C LOOKOUT 7024 AMF CAF NHF DDF
 CRESCENT CREEK ROSEBUD 43W
 CRESCENT CREEK ROSEBUD 24L

BW	76 lbs
WW	661 lbs
YW	888 lbs
BEPD	+1.6
WEPD	+49
YEPD	+78
Milk	+17
TM	+42

EPD'S:	REA:+0.12	Marb:+0.28	Fat:+0.009	Carcass Wt:+12
--------	-----------	------------	------------	----------------

**CRESCENT CREEK ERROLINE 154A****Lot 97** FEMALE DTZ 154A MARCH 09 2013 1771326

B C C-J C L EMBLAZON 038-287
 BRONYX EMBLAZON 58T
 CRESCENT CREEK ROSEBUD 25R

Sire: CRESCENT CREEK EMBLAZON 171Y

GDAR TRAVELER 235
 CRESCENT CREEK HEROINE 121P
 CRESCENT CREEK HEROINE 159M

WANDERING CRK DYNASTY JRM 2F
 SILVER DOME DYNASTY 19T
 SILVER DOME OAKLEAF 119L

Dam: CRESCENT CREEK DYNASTY 127X

TEHAMA RIVERBEND 802 AMF
 CRESCENT CREEK ERROLINE 27R
 CRESCENT CREEK EROLINE 56L

BW	92 lbs
WW	630 lbs
YW	845 lbs
BEPD	+6.1
WEPD	+44
YEPD	+72
Milk	+12
TM	+34

EPD'S:	REA:+0.21	Marb:+0.14	Fat:	Carcass Wt:+9
--------	-----------	------------	------	---------------



CRESCENT CREEK BLACKBIRD 144A

Lot 98 FEMALE WOS 144A FEBRUARY 28 2013 1764869

B C C-J C L EMBLAZON 038-287
BRONYX EMBLAZON 58T
CRESCENT CREEK ROSEBUD 25R

Sire: CRESCENT CREEK EMBLAZON 171Y

GDAR TRAVELER 235
CRESCENT CREEK HEROINE 121P
CRESCENT CREEK HEROINE 159M

E X A R SCOTCH CAP 816
RR SCOTCHMAN 2999
ERICA LASSIE OF R R 8464

Dam: CRESCENT CREEK BLACKBIRD 153W

GDAR QUANTUM 963
CRESCENT CREEK PRIDE 34P
CRESCENT CREEK PRIDE 13C

BW	82 lbs
WW	580 lbs
YW	842 lbs
BEPD	+1.9
WEPD	+49
YEPD	+79
Milk	+24
TM	+49



CRESCENT CREEK BARDELLA 141A

Lot 99 FEMALE DTZ 141A FEBRUARY 26 2013 1760246

FIGURE 7 ANGUS TOM BOY 509R
LOOKOUT HUCK 53T
LOOKOUT EDNA 145L

Sire: CRESCENT CREEK TOMBOY

SITZ HERITAGE 10709
CRESCENT CREEK ROSEBUD 6R
CRESCENT CREEK ROSEBUD 115F

FIGURE 8 ANGUS TOM BOY 509R
LOOKOUT HUCK 53T
LOOKOUT EDNA 145L

Dam: CRESCENT CREEK BARDELLA 92S

B C LOOKOUT 7024 AMF CAF NHF DDF
CRESCENT CREEK ROSEBUD 43W
CRESCENT CREEK ROSEBUD 24L

B Wt	76 lbs
205 Wt	661 lbs
365 Wt	888 lbs
BEPD	+1.4
WEPD	+49
YEPD	+76
Milk	+18
TM	+43



"99" was noted as the great one, and a great one here. We try to keep every 15W female we can, come check them out and see why. Female comes highly recommended from a great cow family.

EPD'S:	REA:+0.11	Marb:+0.27	Fat:+0.007	Carcass Wt:+12
--------	-----------	------------	------------	----------------

CRESCENT CREEK IDESSA 168A

Lot 100 FEMALE WOS 168A MARCH 21 2013 1738111

WESTERN FREEDOM 505
TJF FREEDOM 29U
TJF FORTUNE CHIEF 78R

Sire: BAR D K FREEDOM 3'10

S A V NET WORTH 4200 AMF CAF NHF DDF
BAR D K ERROLLINE 8'07
KRAY ERROLLINE 2'03

C A R IDEAL 650
CAR IDEAL 061
C A R MISS VIKING 061

Dam: CRESCENT CREEK IDESSA 150W

VON ERIC OF BAR LU 90'90
LAZY J BARDELLA LASS 3D
DESSA BARDELLA LASS 17B

BW	lbs
WW	lbs
YW	lbs
BEPD	+6.0
WEPD	+35
YEPD	+59
Milk	+20
TM	+38

*Hope To See Everyone
Sale Day*



Crescent Creek Angus
Box 192
Goodeve, SK, Canada
S0A 1C0



Offering

60 Black Angus Yearling Bulls

40 Top Cut Black Angus Open Females

16th Annual **Bull & Female Sale**

Saturday April 5, 2014

at the farm 1 mile East of Goodeve, SK

& 3 miles North

Lunch at 12:00 noon

Sale at 1:00pm

We look forward to seeing you sale day